

C  
PLAN NO. 102283130

SALINATY LAKE  
SE 1/4 SEC. 20-42-26-2

SW 1/4 SEC. 20-42-26-2

F  
PLAN NO. 102363072

G  
237°35'48"  
PLAN NO. 102363072

SALINATY LAKE

B  
PLAN NO. 102283130

NE 1/4 SEC. 17-42-26-2

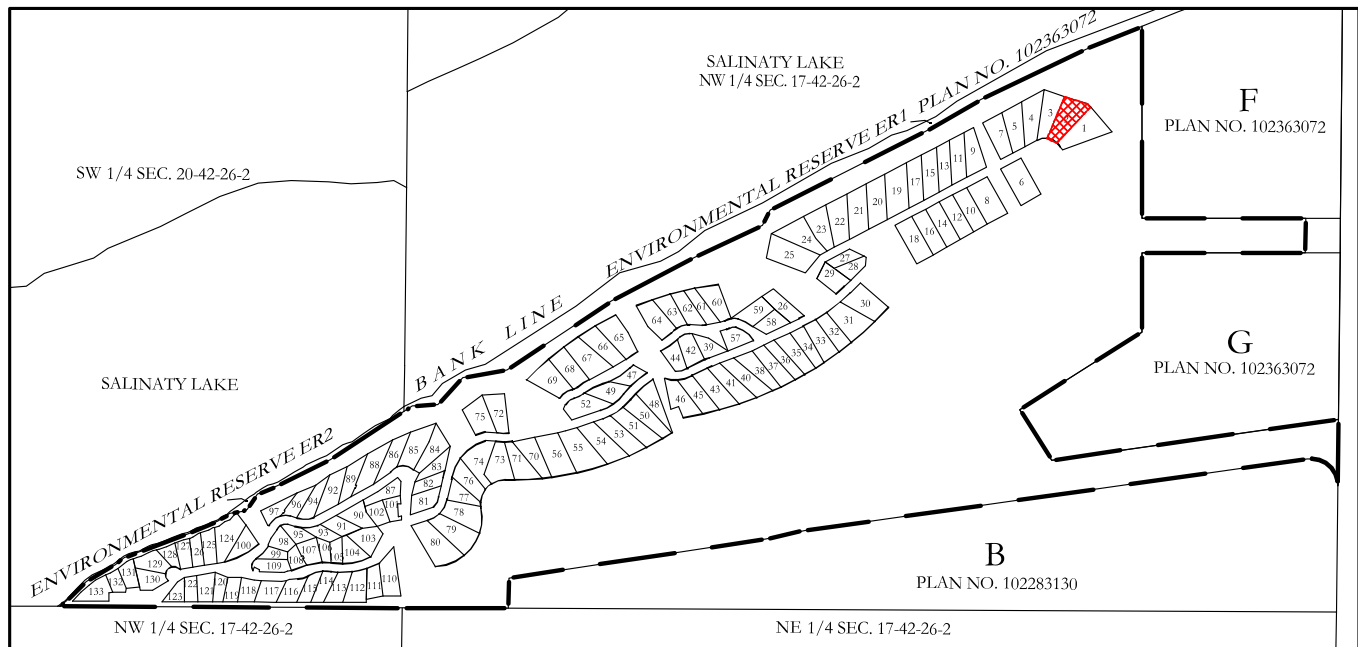
NW 1/4 SEC. 17-42-26-2

SW 1/4 SEC. 21-42-26-2

ROAD ALLOWANCE

XVII—XLII—XKVI

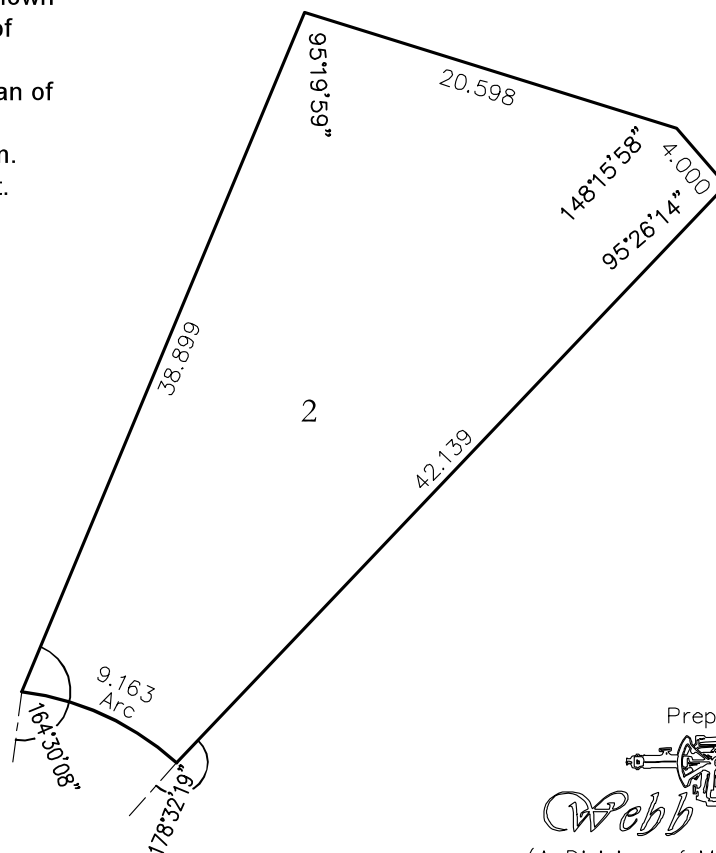
# UNIT 2 CONDO PLAN 102369786 KEYPLAN



## Legend

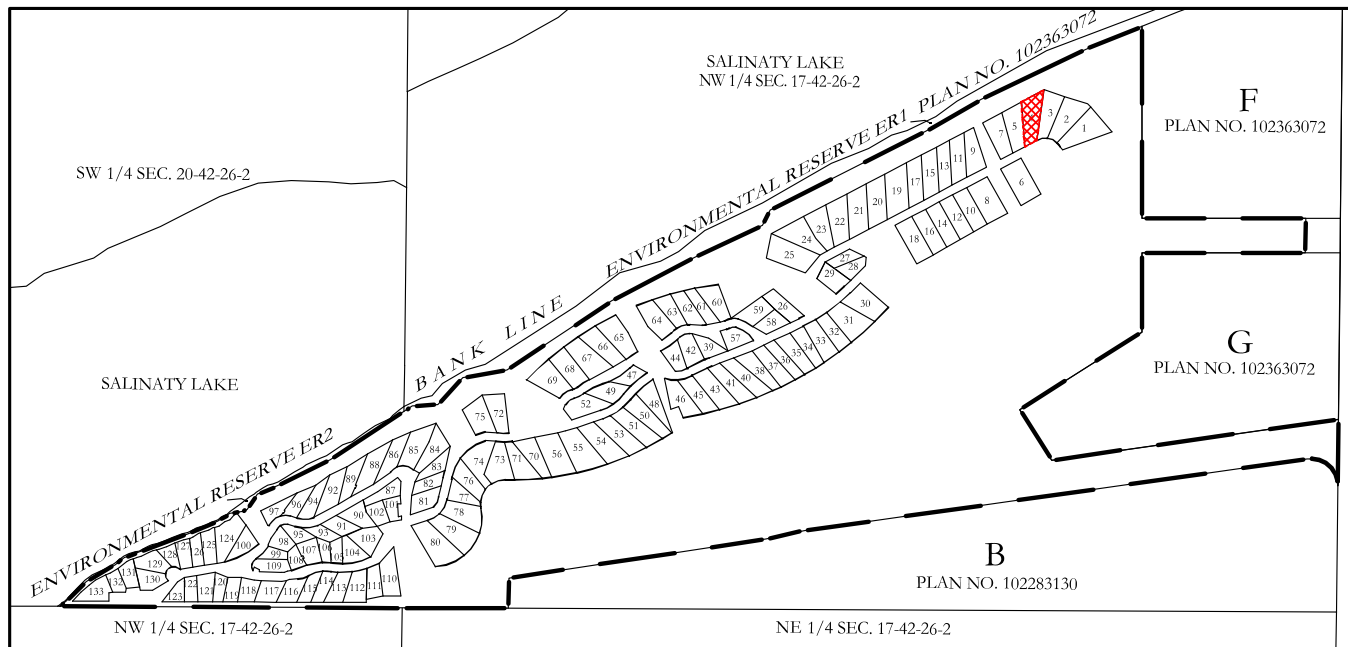
1. Measurements are in metres and decimals thereof.
2. Dimensions and angles shown are copied from the plan of survey. In the case of discrepancies the legal plan of survey will govern
3. Area of unit 665.80 sq.m.  
7166.6 sq.ft.

**SITE 2**  
**\$64,900**



Prepared by  
  
**Webb Surveys**  
(A Division of Midwest Surveys Inc.)  
SC-0236-19 BJB

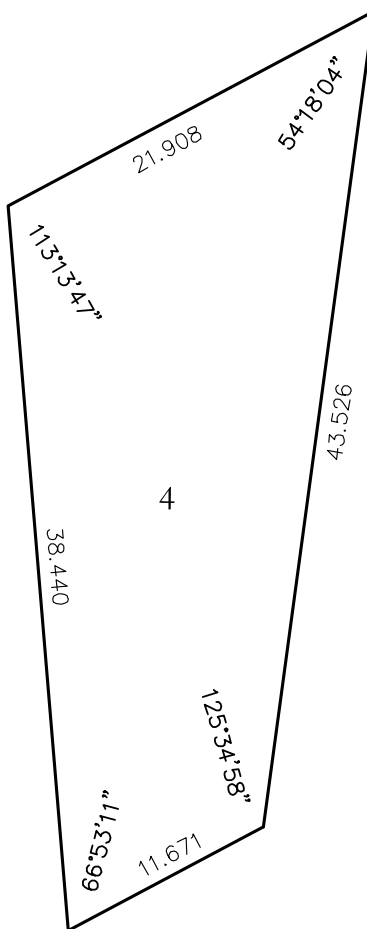
# UNIT 4 CONDO PLAN 102369786 KEYPLAN



## Legend

1. Measurements are in metres and decimals thereof.
2. Dimensions and angles shown are copied from the plan of survey. In the case of discrepancies the legal plan of survey will govern
3. Area of unit 593.50 sq.m.  
6388.3 sq.ft.

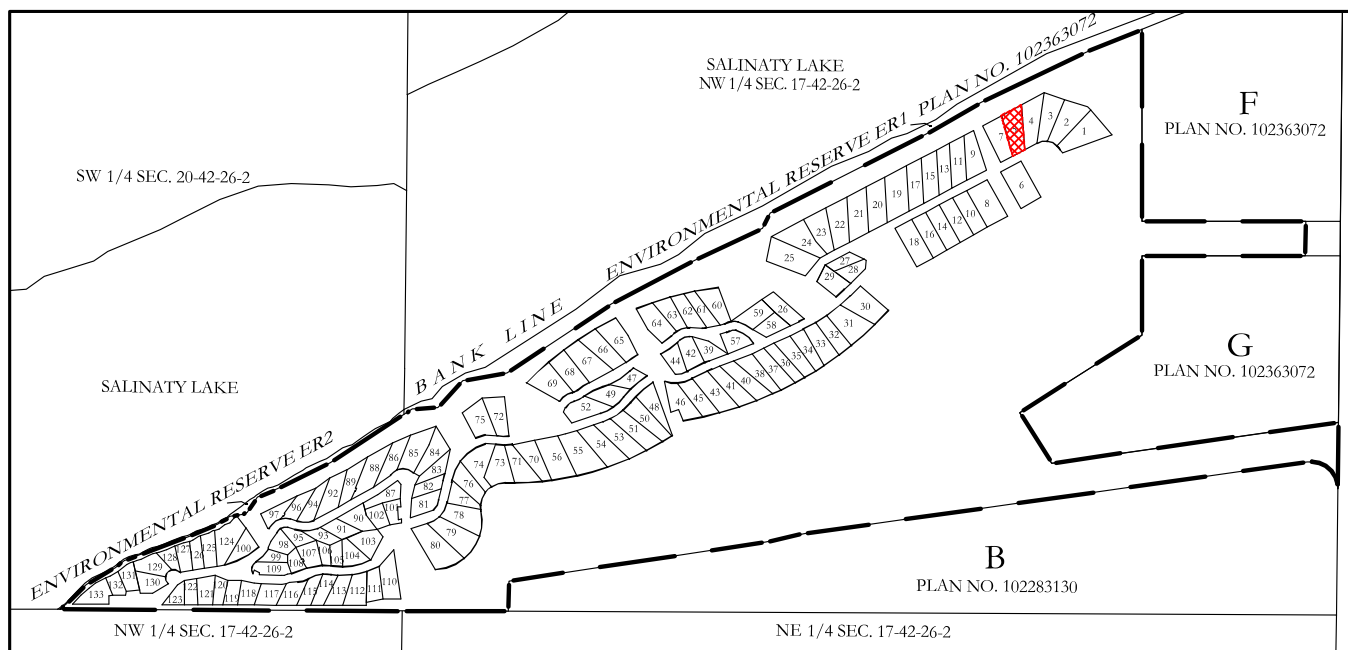
**SITE 4**  
**\$64,900**



Prepared by

**Webb Surveys**  
(A Division of Midwest Surveys Inc.)  
SC-0236-19 BJB

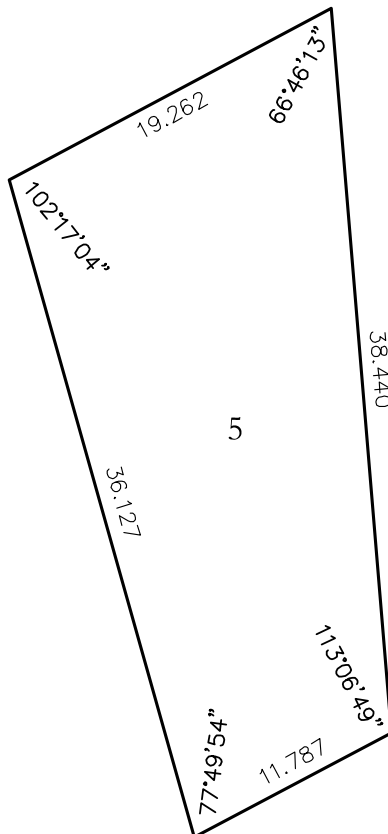
# UNIT 5 CONDO PLAN 102369786 KEYPLAN



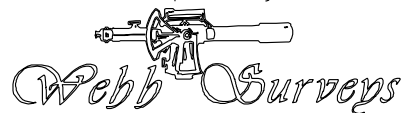
## Legend

1. Measurements are in metres and decimals thereof.
2. Dimensions and angles shown are copied from the plan of survey. In the case of discrepancies the legal plan of survey will govern
3. Area of unit 548.33 sq.m.  
5902.2 sq.ft.

**SITE 5**  
**\$64,900**

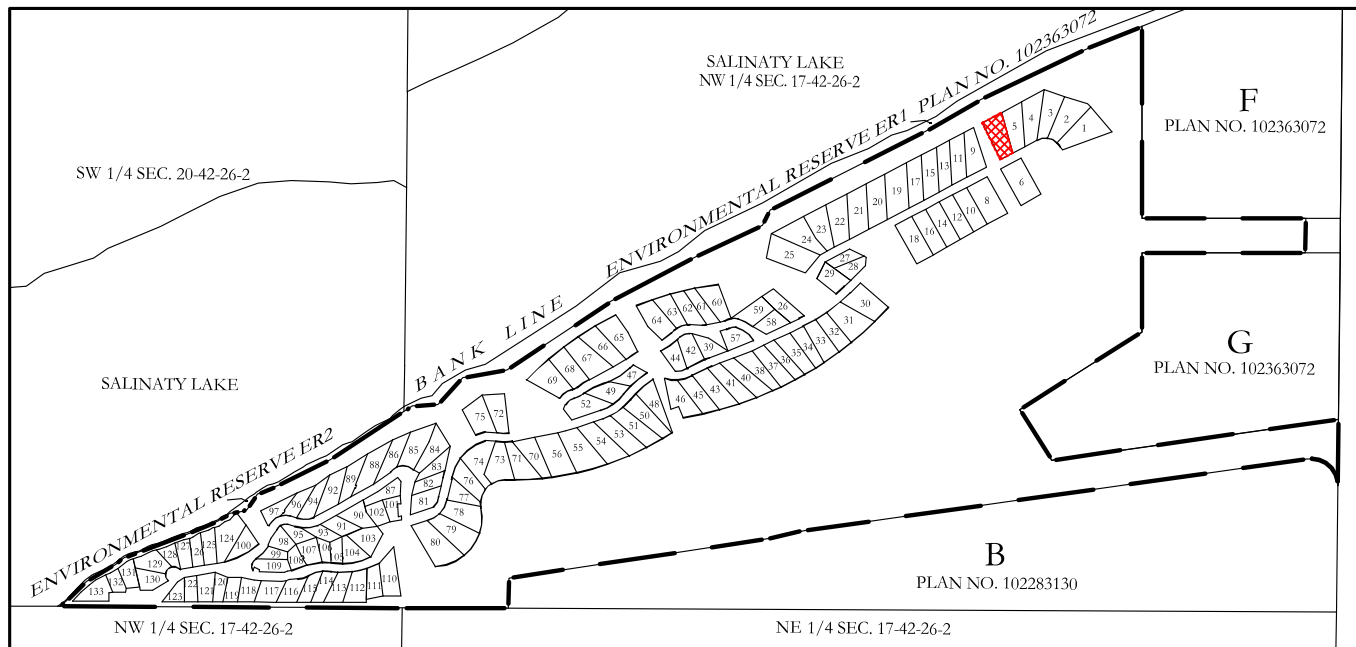


Prepared by



(A Division of Midwest Surveys Inc.)  
SC-0236-19 BJB

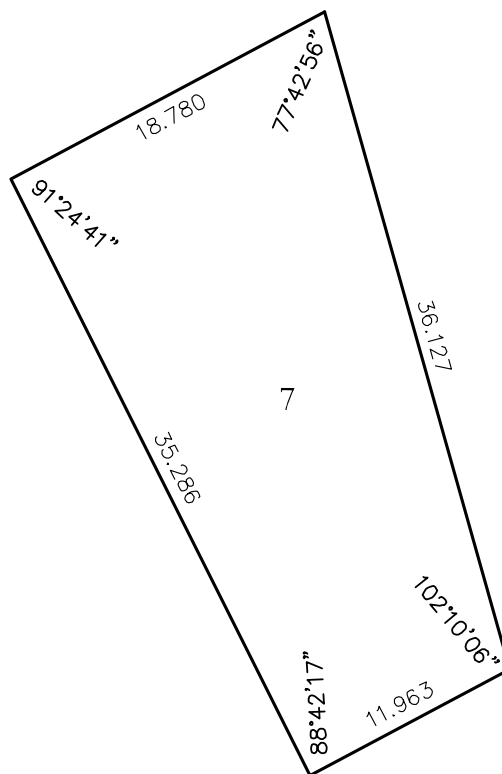
# UNIT 7 CONDO PLAN 102369786 KEYPLAN



## Legend

1. Measurements are in metres and decimals thereof.
2. Dimensions and angles shown are copied from the plan of survey. In the case of discrepancies the legal plan of survey will govern
3. Area of unit 542.47 sq.m.  
5839.1 sq.ft.

**SITE 7**  
**\$64,900**

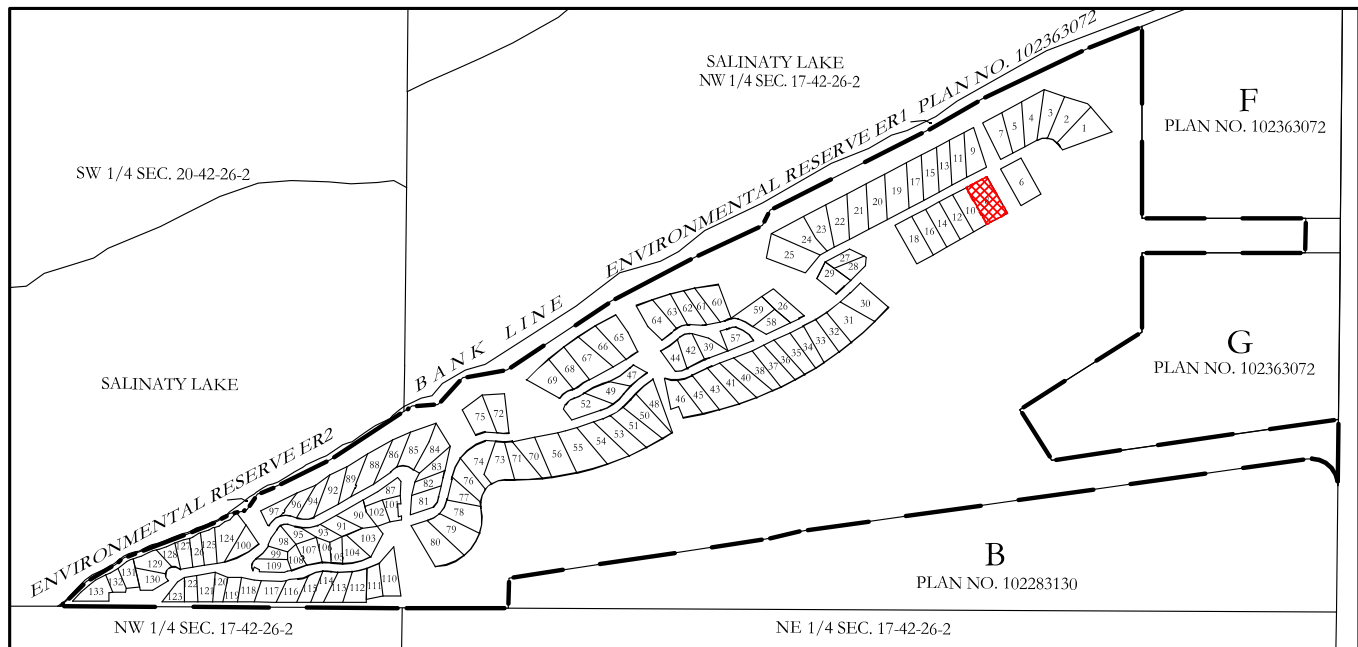


Prepared by



(A Division of Midwest Surveys Inc.)  
SC-0236-19 BJJ

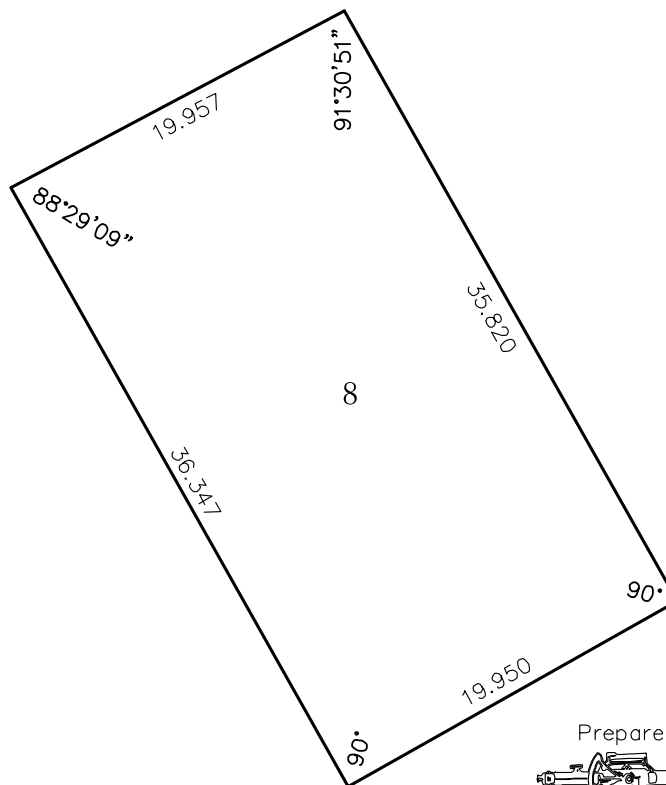
# UNIT 8 CONDO PLAN 102369786 KEYPLAN



## Legend

1. Measurements are in metres and decimals thereof.
2. Dimensions and angles shown are copied from the plan of survey. In the case of discrepancies the legal plan of survey will govern
3. Area of unit 719.86 sq.m.  
7748.5 sq.ft.

**SITE 8**  
**54,900**



Prepared by

*Webb Surveys*

(A Division of Midwest Surveys Inc.)

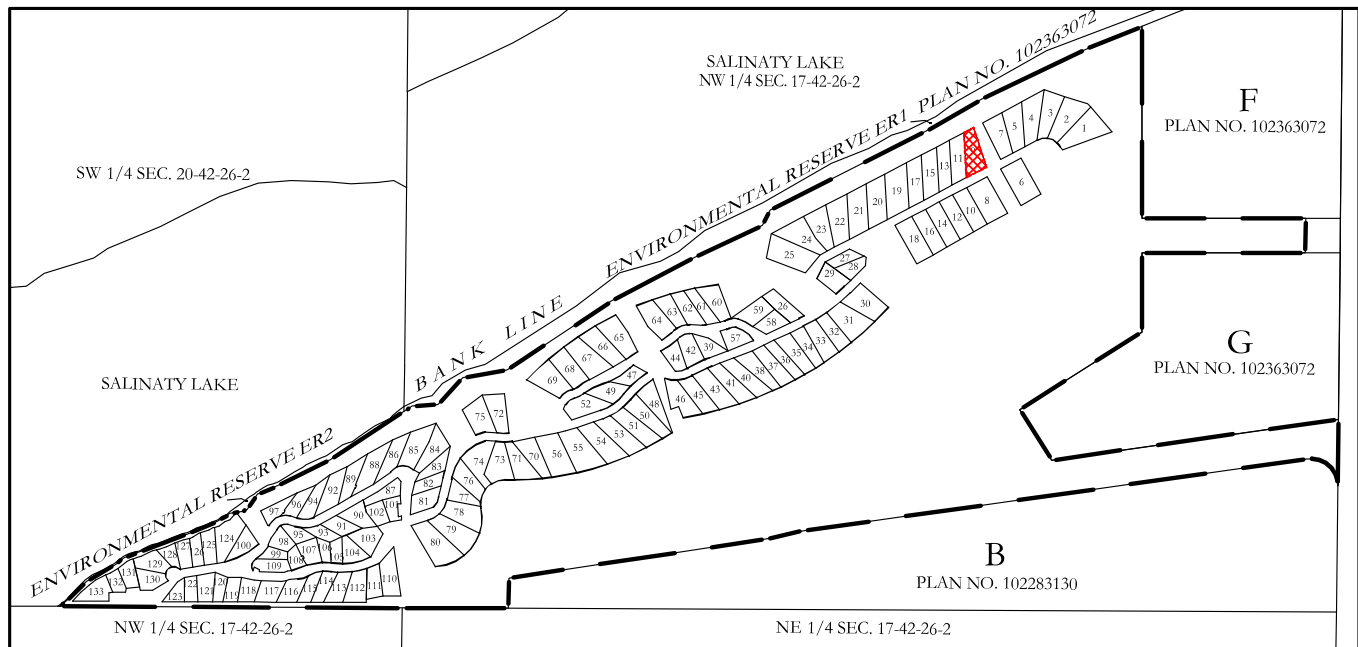
SC-0236-19 BJJ



# UNIT 9

## CONDO PLAN 102369786

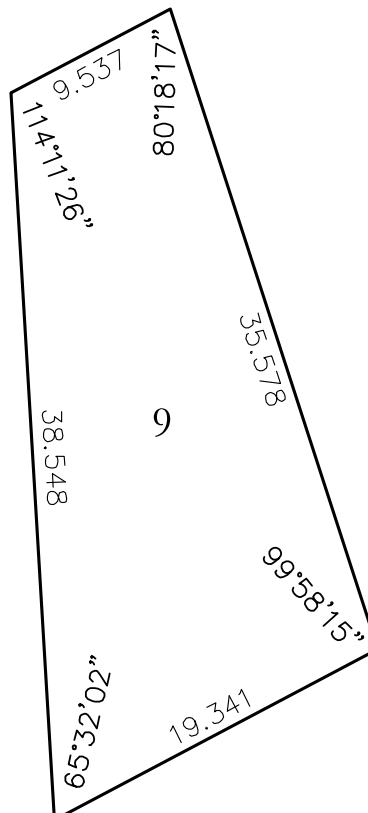
### KEYPLAN



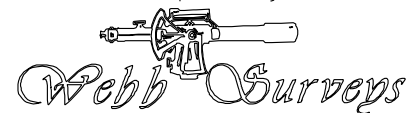
#### Legend

1. Measurements are in metres and decimals thereof.
2. Dimensions and angles shown are copied from the plan of survey. In the case of discrepancies the legal plan of survey will govern
3. Area of unit 506.53 sq.m.  
5452.3 sq.ft.

**SITE 9**  
**\$64,900**



Prepared by

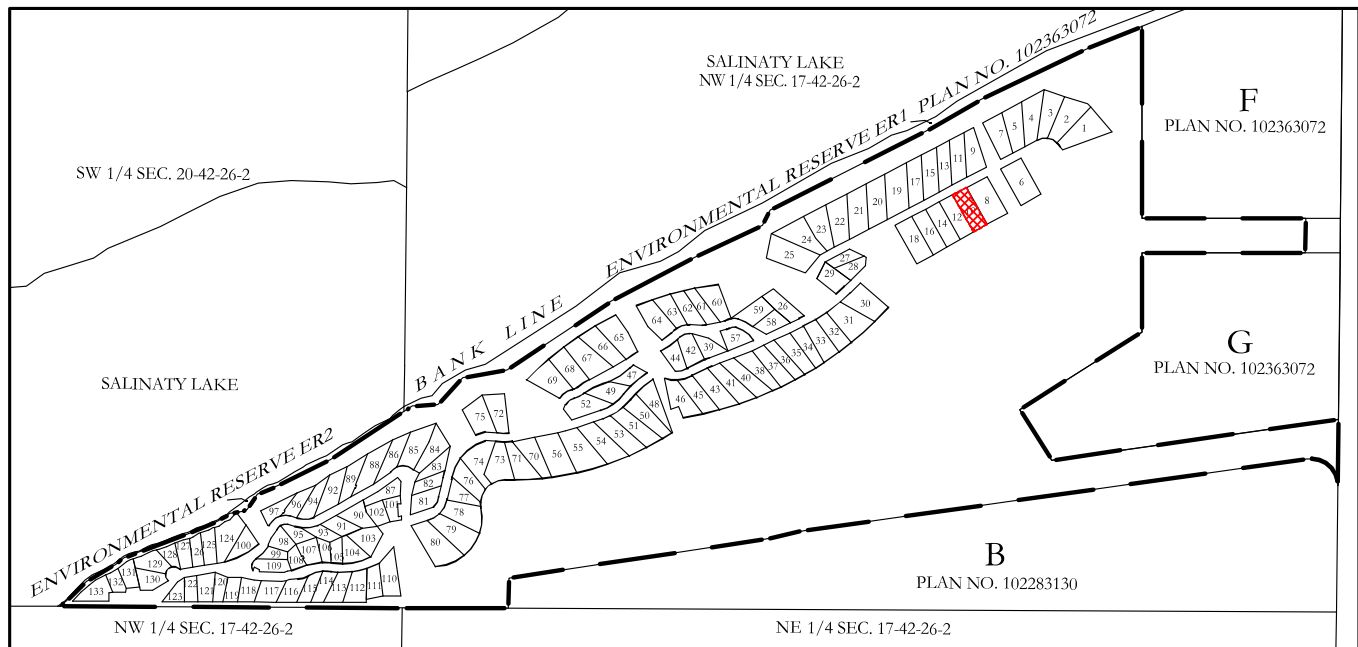


(A Division of Midwest Surveys Inc.)  
SC-0236-19 BJJ

# UNIT 10

## CONDO PLAN 102369786

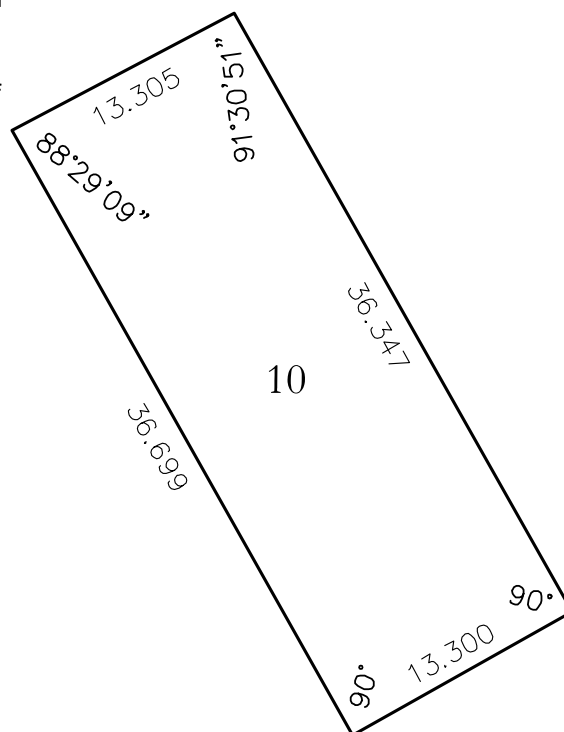
### KEYPLAN



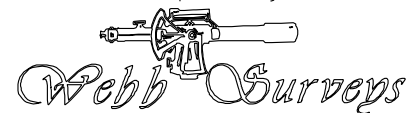
#### Legend

1. Measurements are in metres and decimals thereof.
2. Dimensions and angles shown are copied from the plan of survey. In the case of discrepancies the legal plan of survey will govern
3. Area of unit 485.75 sq.m.  
5228.6 sq.ft.

**SITE 10**  
**\$54,900**



Prepared by



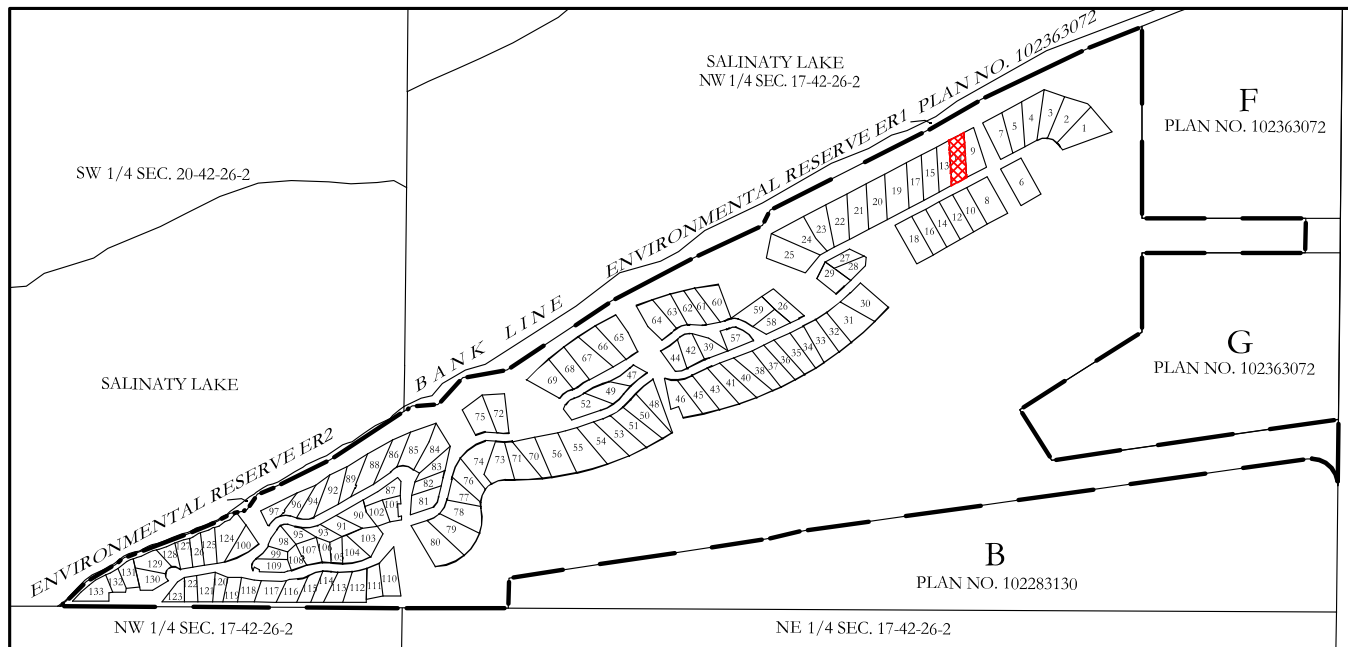
(A Division of Midwest Surveys Inc.)  
SC-0236-19 BJB



# UNIT 11

## CONDO PLAN 102369786

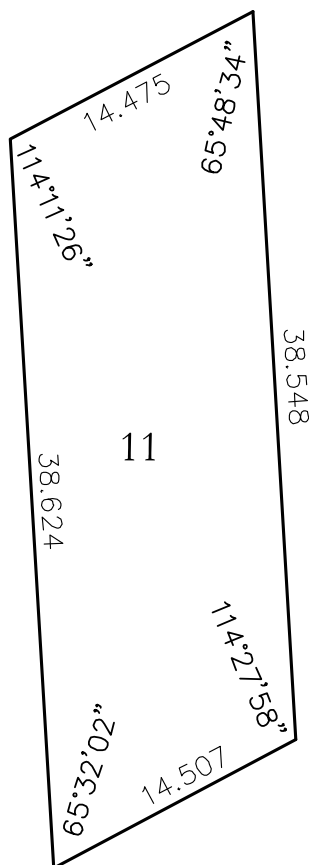
### KEYPLAN



#### Legend

1. Measurements are in metres and decimals thereof.
2. Dimensions and angles shown are copied from the plan of survey. In the case of discrepancies the legal plan of survey will govern
3. Area of unit 509.50 sq.m.  
5484.2 sq.ft.

**SITE 11**  
**\$64,900**

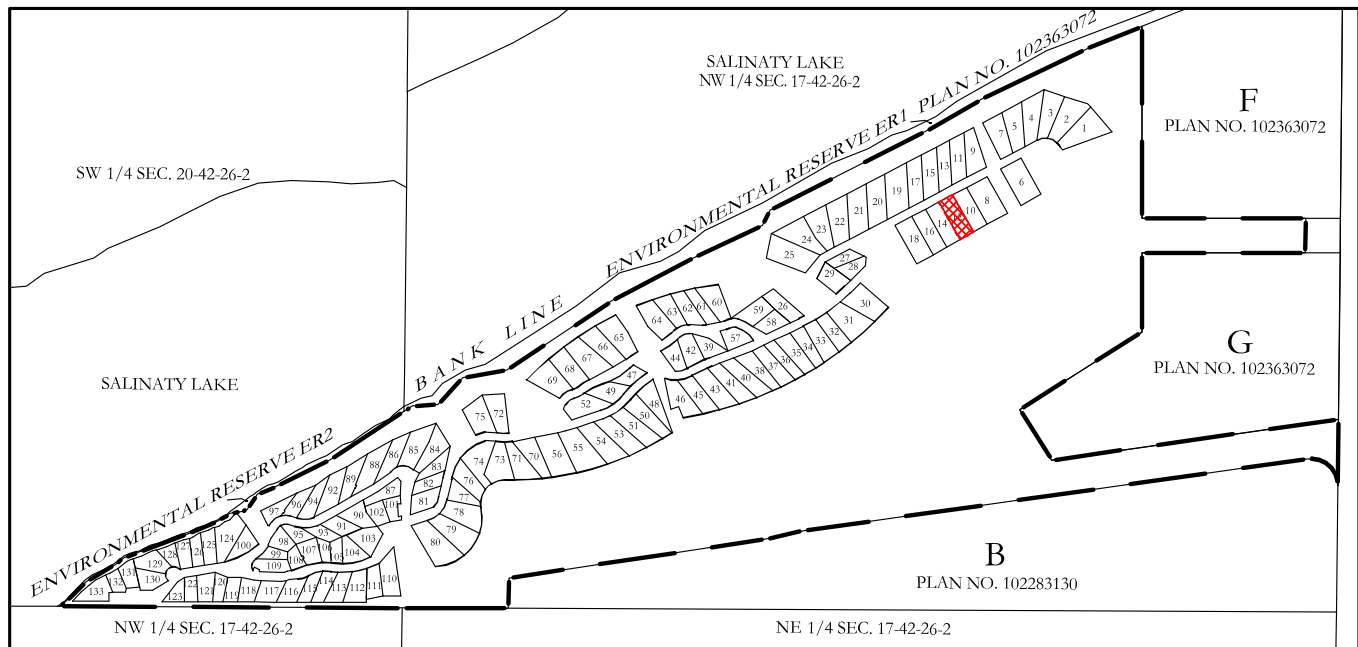


Prepared by  
  
 Webb Surveys  
 (A Division of Midwest Surveys Inc.)  
 SC-0236-19 BJJ

# UNIT 12

## CONDO PLAN 102369786

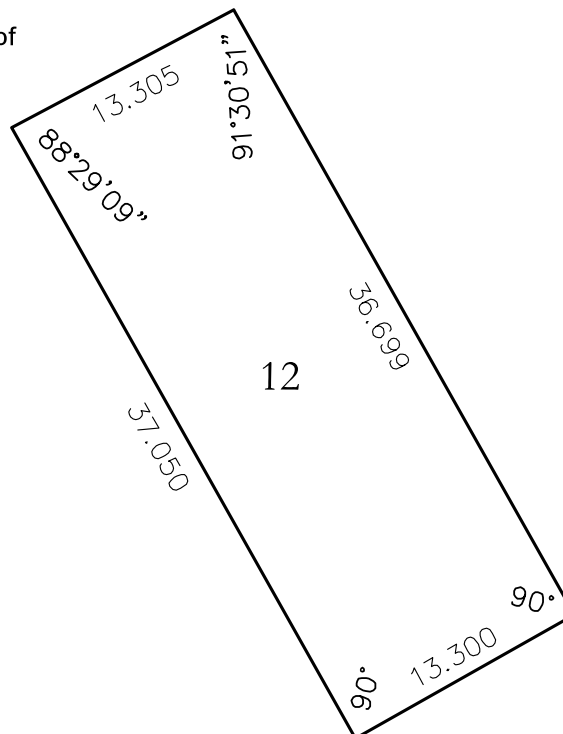
### KEYPLAN



#### Legend

1. Measurements are in metres and decimals thereof.
2. Dimensions and angles shown are copied from the plan of survey. In the case of discrepancies the legal plan of survey will govern
3. Area of unit 490.43 sq.m.  
5278.9 sq.ft.

**SITE 12**  
**\$54,900**

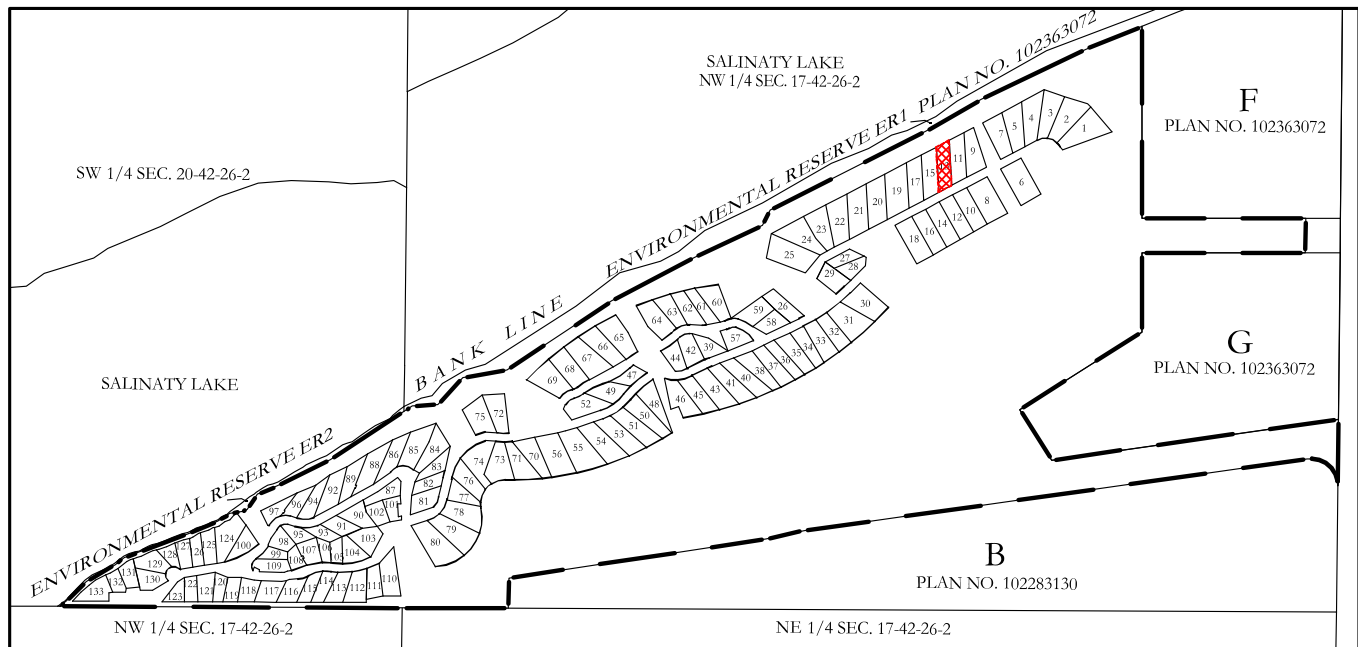


Prepared by  
  
 Webb Surveys  
 (A Division of Midwest Surveys Inc.)  
 SC-0236-19 BJB

# UNIT 13

## CONDO PLAN 102369786

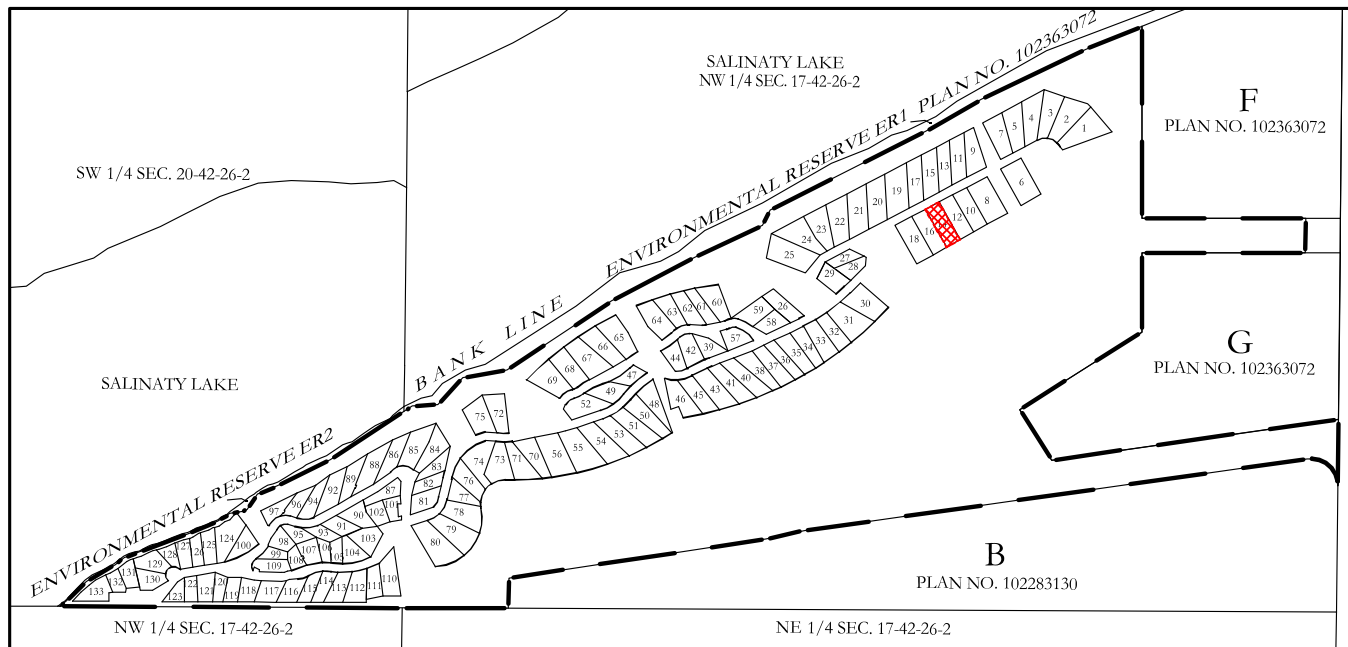
### KEYPLAN



# UNIT 14

## CONDO PLAN 102369786

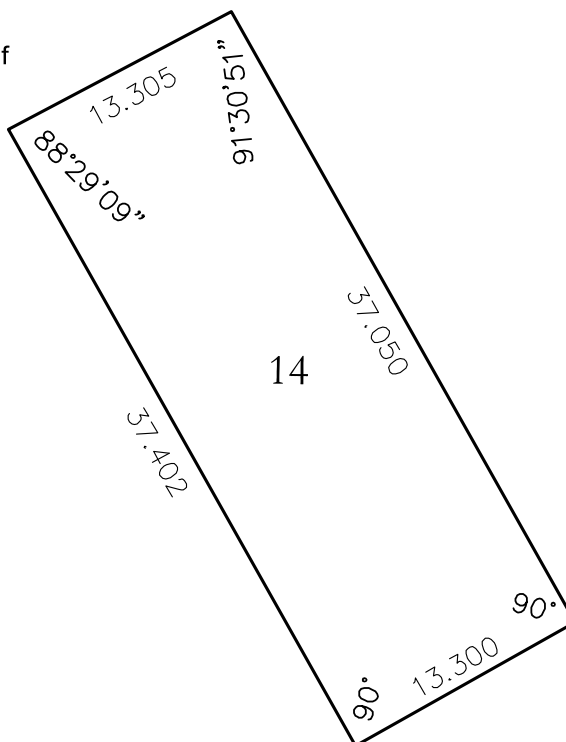
### KEYPLAN



#### Legend

1. Measurements are in metres and decimals thereof.
2. Dimensions and angles shown are copied from the plan of survey. In the case of discrepancies the legal plan of survey will govern
3. Area of unit 495.10 sq.m.  
5329.3 sq.ft.

**SITE 14**  
**\$54,900**

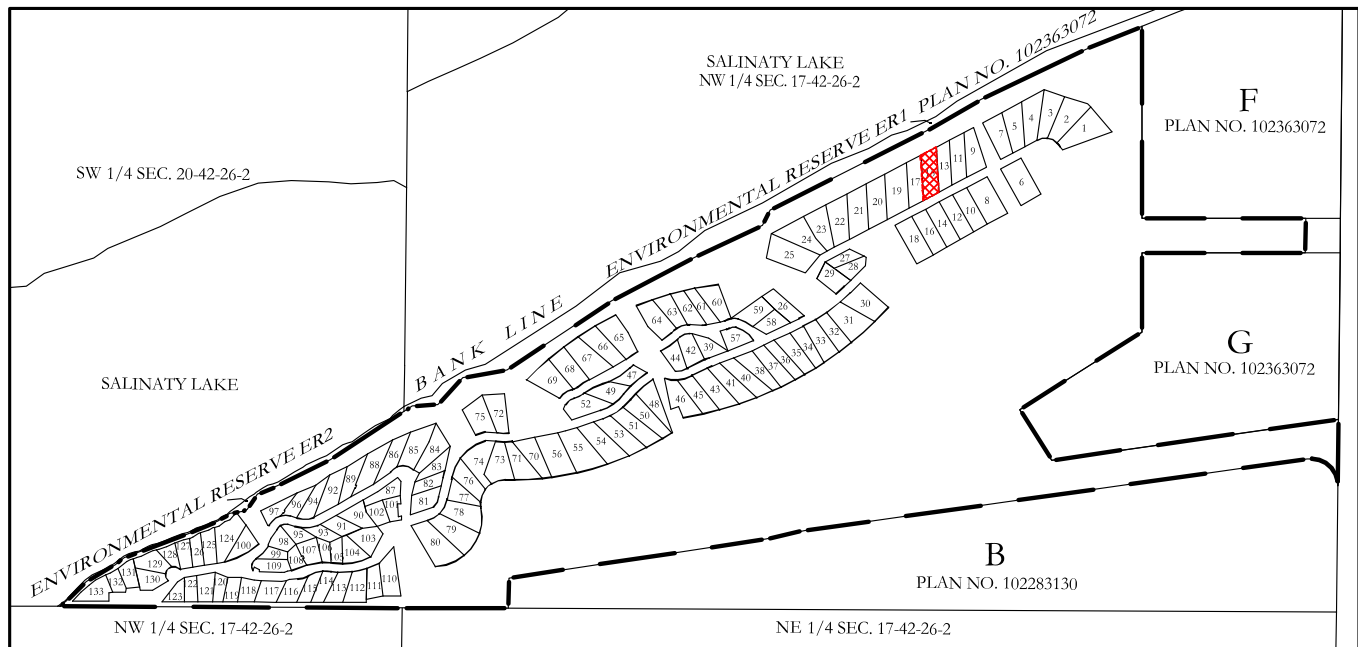


Prepared by  
  
 Webb Surveys  
 (A Division of Midwest Surveys Inc.)  
 SC-0236-19 BJB

# UNIT 15

## CONDO PLAN 102369786

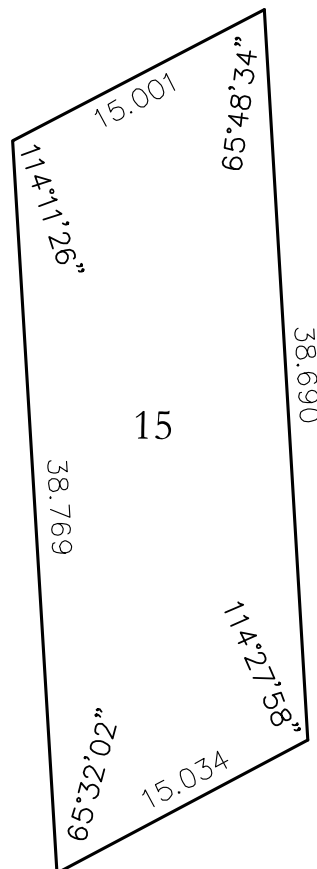
### KEYPLAN



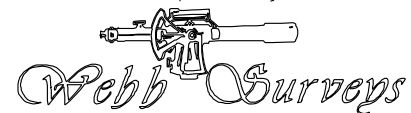
### Legend

1. Measurements are in metres and decimals thereof.
2. Dimensions and angles shown are copied from the plan of survey. In the case of discrepancies the legal plan of survey will govern
3. Area of unit 529.97 sq.m.  
5704.5 sq.ft.

**SITE 15**  
**\$64,900**



Prepared by

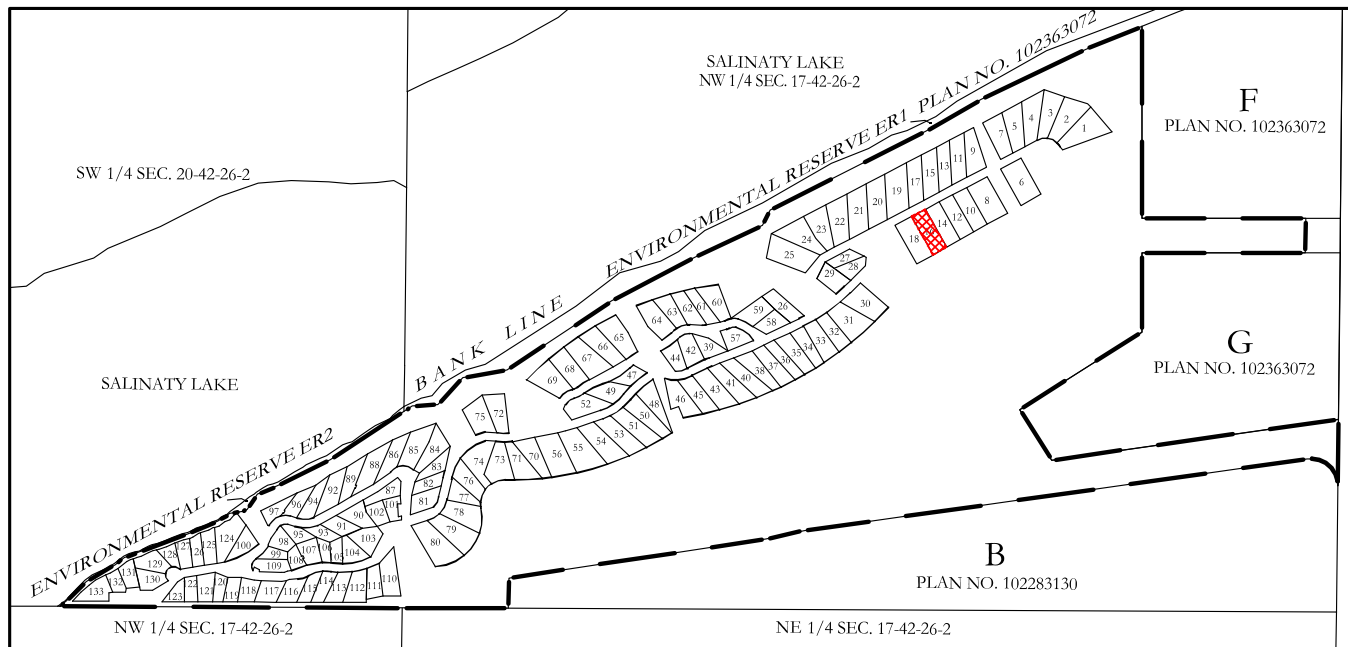


(A Division of Midwest Surveys Inc.)  
SC-0236-19 BJB

# UNIT 16

## CONDO PLAN 102369786

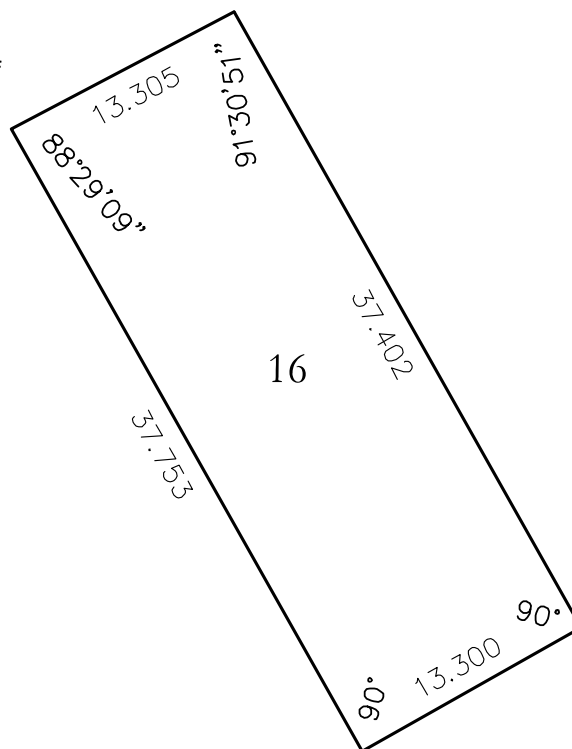
### KEYPLAN



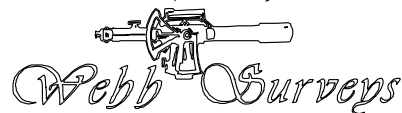
#### Legend

1. Measurements are in metres and decimals thereof.
2. Dimensions and angles shown are copied from the plan of survey. In the case of discrepancies the legal plan of survey will govern
3. Area of unit 499.78 sq.m.  
5379.6 sq.ft.

**SITE 16**  
**\$54,900**



Prepared by



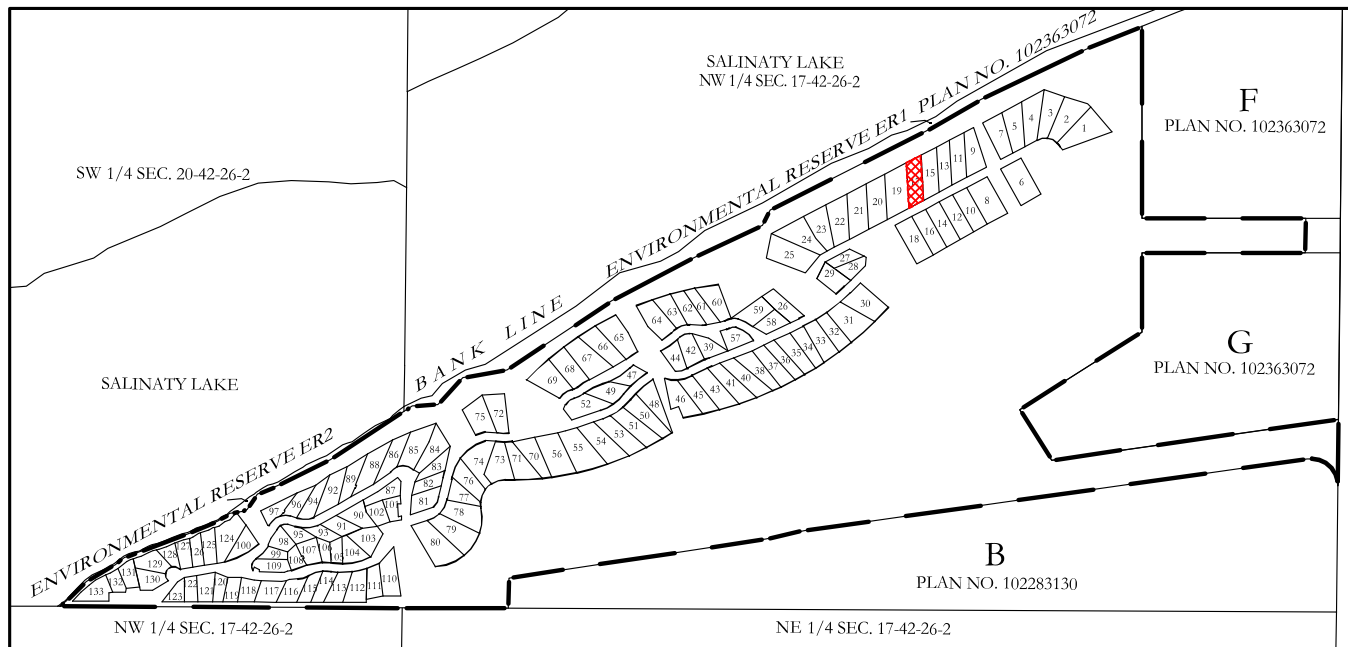
(A Division of Midwest Surveys Inc.)  
SC-0236-19 BJB



# UNIT 17

## CONDO PLAN 102369786

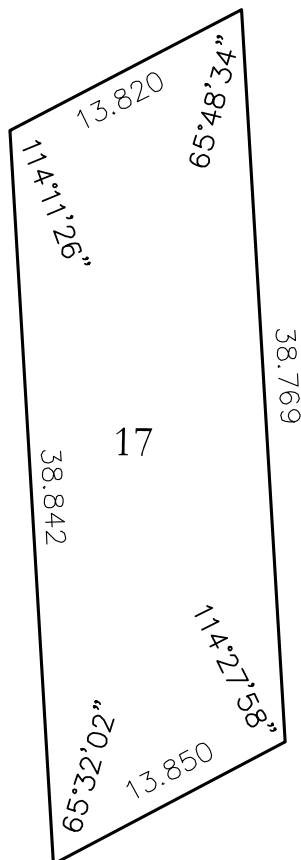
### KEYPLAN



### Legend

1. Measurements are in metres and decimals thereof.
2. Dimensions and angles shown are copied from the plan of survey. In the case of discrepancies the legal plan of survey will govern
3. Area of unit 489.20 sq.m.  
5265.7 sq.ft.

**SITE 17**  
**\$64,900**



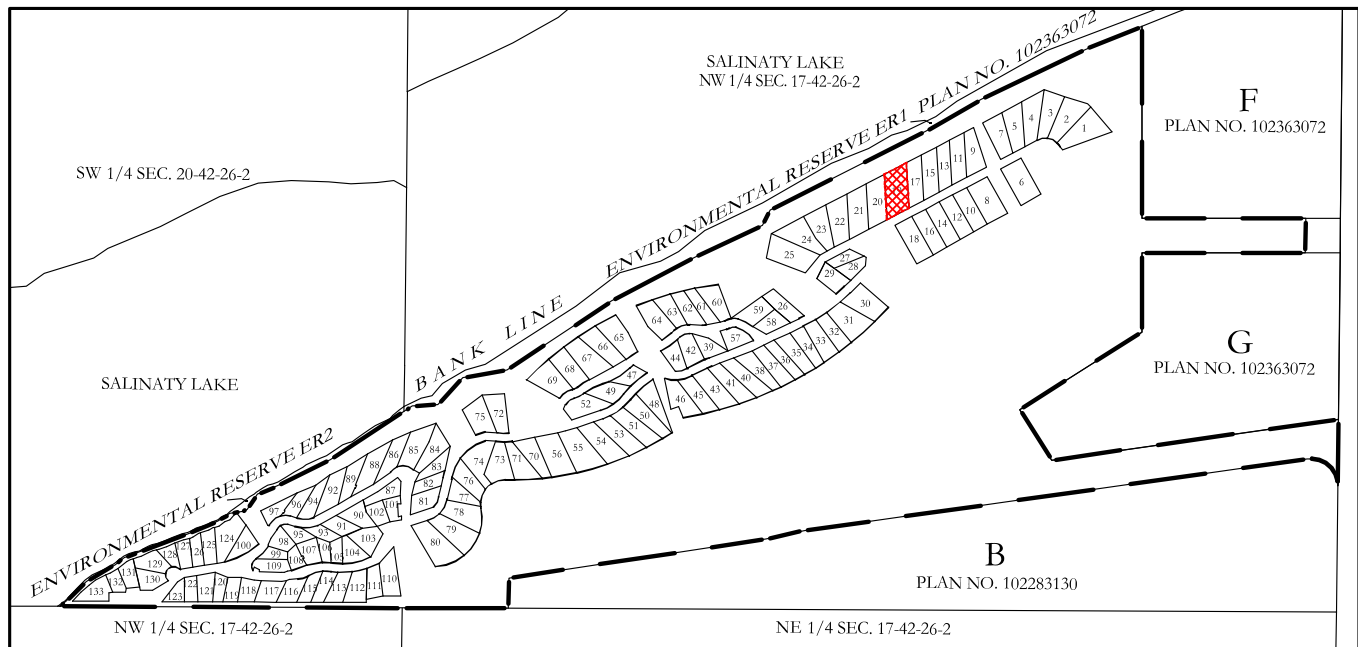
Prepared by

**Webb Surveys**  
(A Division of Midwest Surveys Inc.)  
SC-0236-19 BJJ

# UNIT 19

## CONDO PLAN 102369786

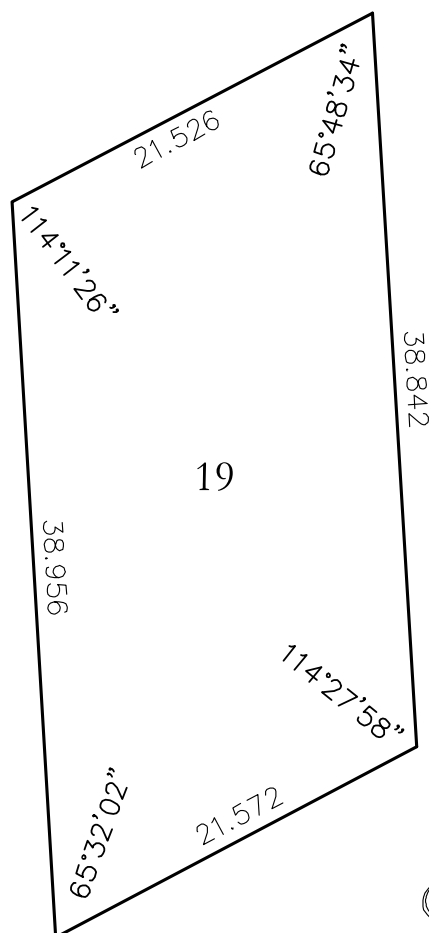
### KEYPLAN



#### Legend

1. Measurements are in metres and decimals thereof.
2. Dimensions and angles shown are copied from the plan of survey. In the case of discrepancies the legal plan of survey will govern
3. Area of unit 763.80 sq.m.  
8221.5 sq.ft.

**SITE 19**  
**\$64,900**

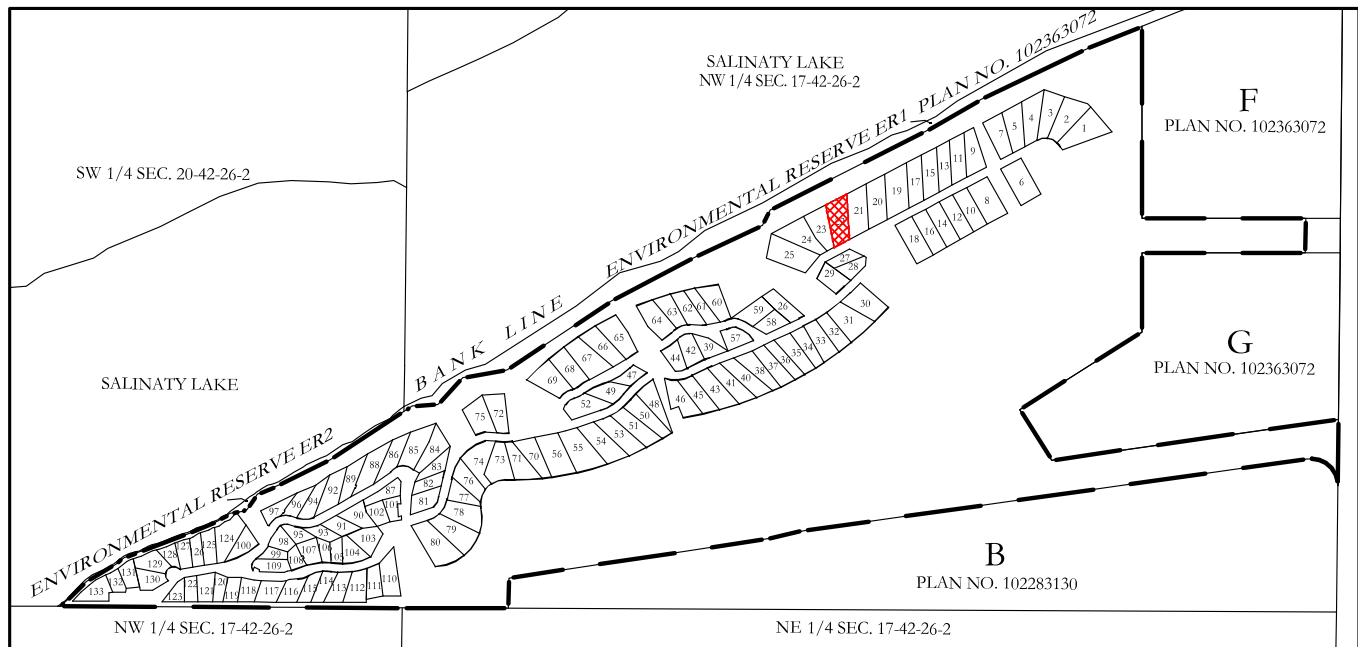


Prepared by



(A Division of Midwest Surveys Inc.)  
SC-0236-19 BJB

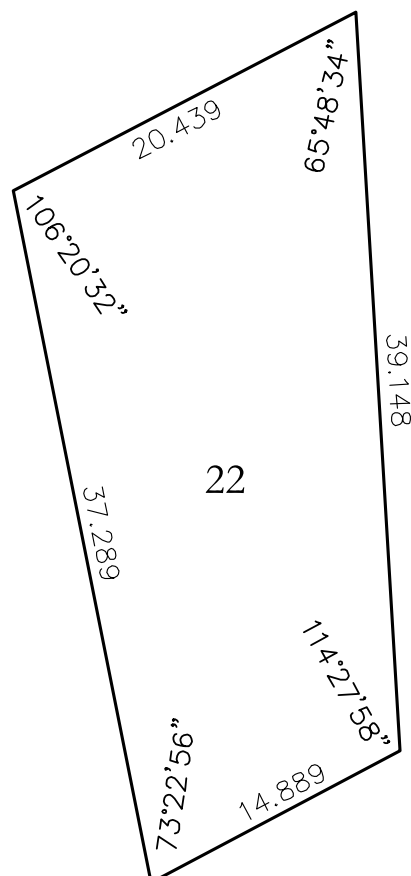
# UNIT 22 CONDO PLAN 102369786 KEYPLAN



## Legend

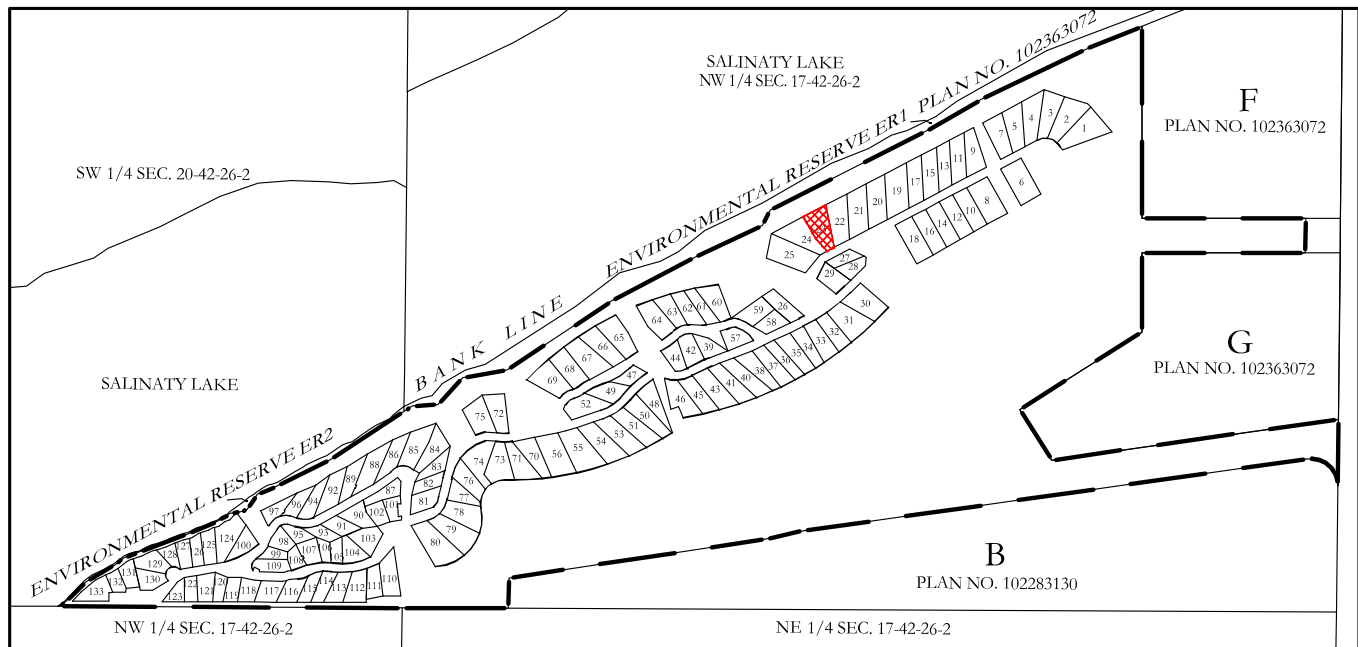
1. Measurements are in metres and decimals thereof.
2. Dimensions and angles shown are copied from the plan of survey. In the case of discrepancies the legal plan of survey will govern
3. Area of unit 630.94 sq.m.  
6791.4 sq.ft.

**SITE 22**  
**\$64,900**



Prepared by  
  
**Webb Surveys**  
(A Division of Midwest Surveys Inc.)  
SC-0236-19 BJB

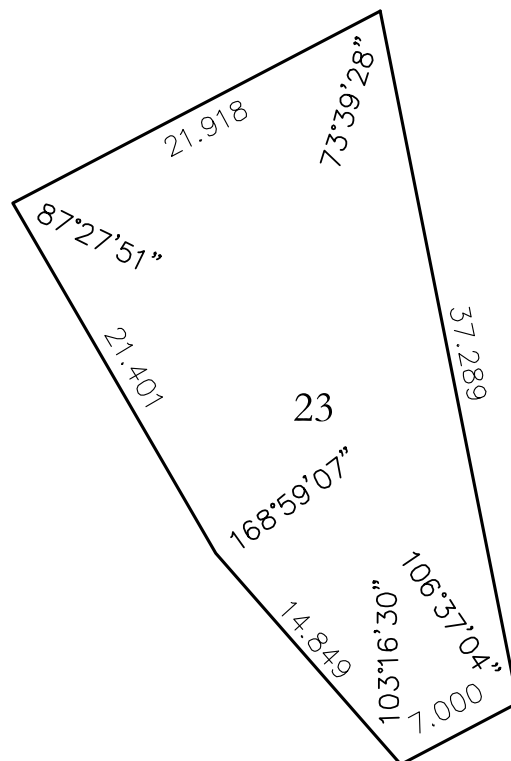
# UNIT 23 CONDO PLAN 102369786 KEYPLAN



## Legend

1. Measurements are in metres and decimals thereof.
2. Dimensions and angles shown are copied from the plan of survey. In the case of discrepancies the legal plan of survey will govern
3. Area of unit 547.92 sq.m.  
5897.8 sq.ft.

**SITE 23**  
**\$64,900**



Prepared by

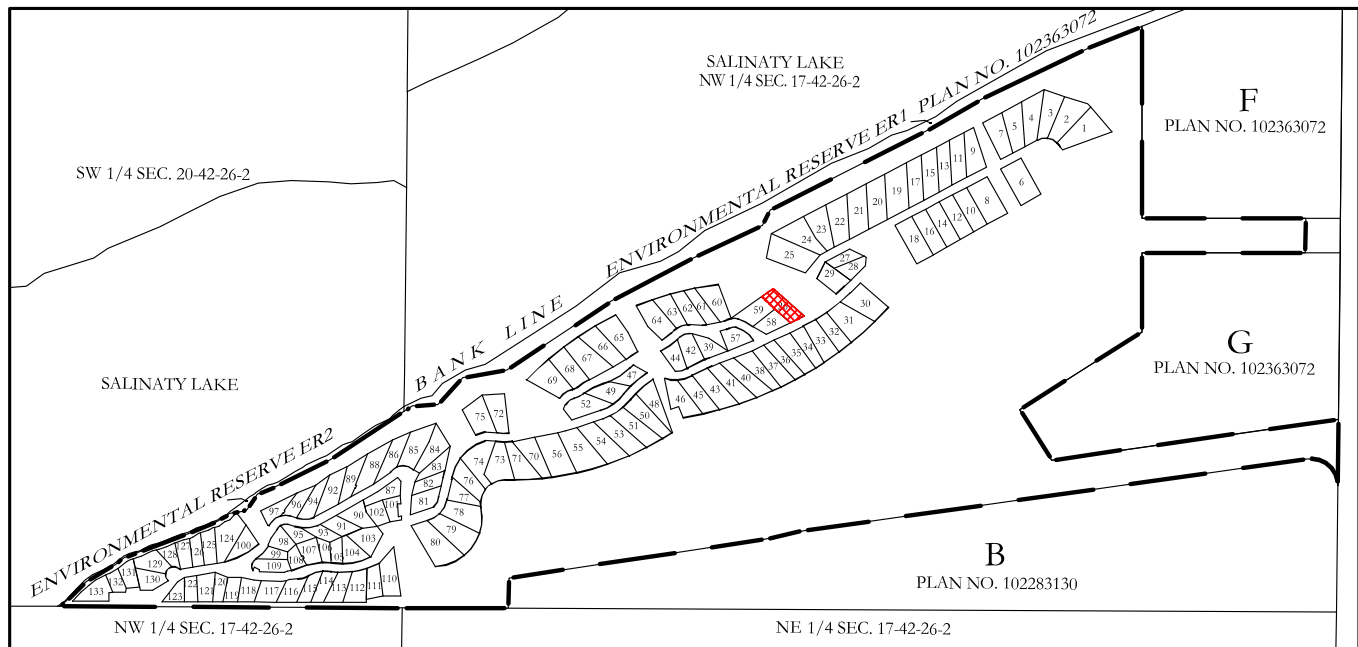
*Webb Surveys*

(A Division of Midwest Surveys Inc.)  
SC-0236-19 BJJ

# UNIT 26

## CONDO PLAN 102369786

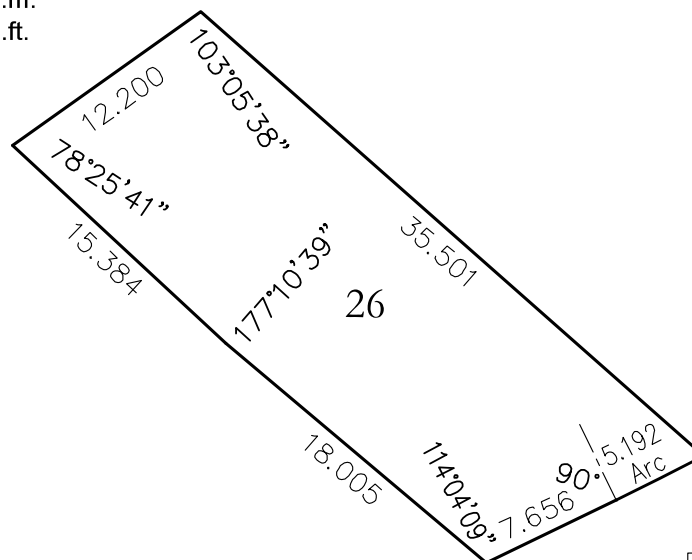
### KEYPLAN



### Legend

1. Measurements are in metres and decimals thereof.
2. Dimensions and angles shown are copied from the plan of survey. In the case of discrepancies the legal plan of survey will govern
3. Area of unit 416.49 sq.m.  
4483.1 sq.ft.

**SITE 26**  
**\$64,900**



Prepared by



(A Division of Midwest Surveys Inc.)  
SC-0236-19 BJJ

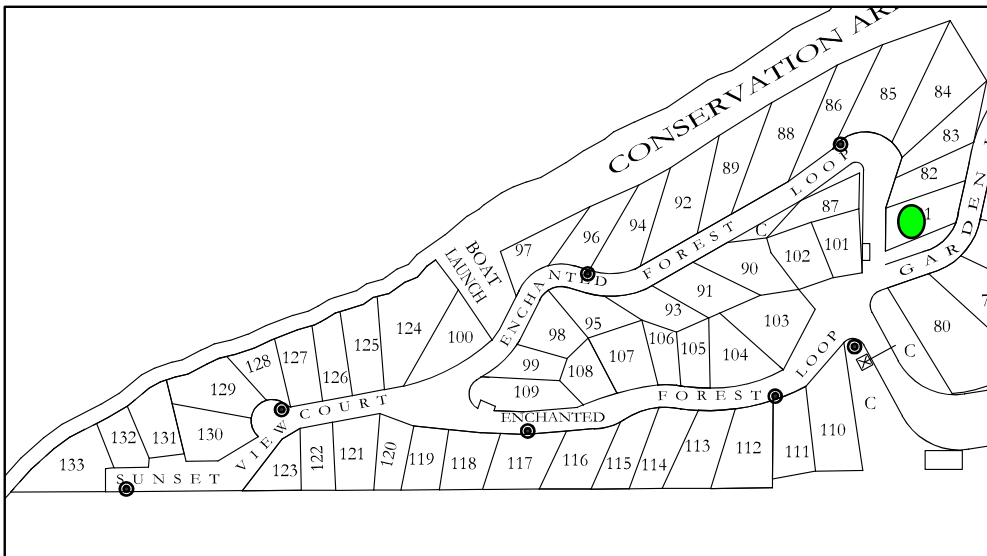
# SCHEDULE 'A'

PLAN SHOWING RV CAMPGROUND PHASE 1  
S.W. 1/4 SEC. 20, TWP. 42, RGE. 26, W. 2ND MER.  
RM of HOODOO #401, SASKATCHEWAN  
BY T.R. WEBB, S.L.S. FEBRUARY 2017  
SCALE 1:500

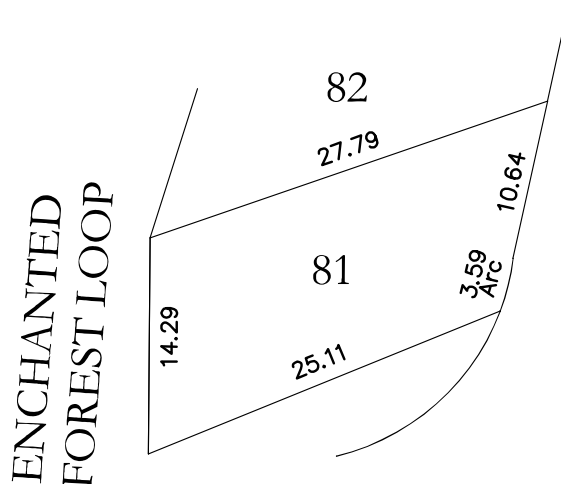


1. Dimensions shown are in metres and decimals thereof.
  2. Parcel C represents Conservation Area
  3. A campground administration permit is required prior to removal of live trees and shrubs.
  4. Cutting of trees and shrubbery in the Conservation Areas is not allowed
  5. Cutting trees and shrubbery in the buffer strip along the lakeshore is not allowed.  
Alteration of the Lake Bank is not allowed.
- \*NO CLEAR CUTTING IS ALLOWED\*

## KEY PLAN



**SITE 81**  
**\$49,900**



APPROXIMATE  
AREA OF LOT 81  
sq. m. = 334.57±  
sq. ft. = 3601.3±

Prepared by

  
*Webb Surveys*

© 2017

11-2219cc

BJF



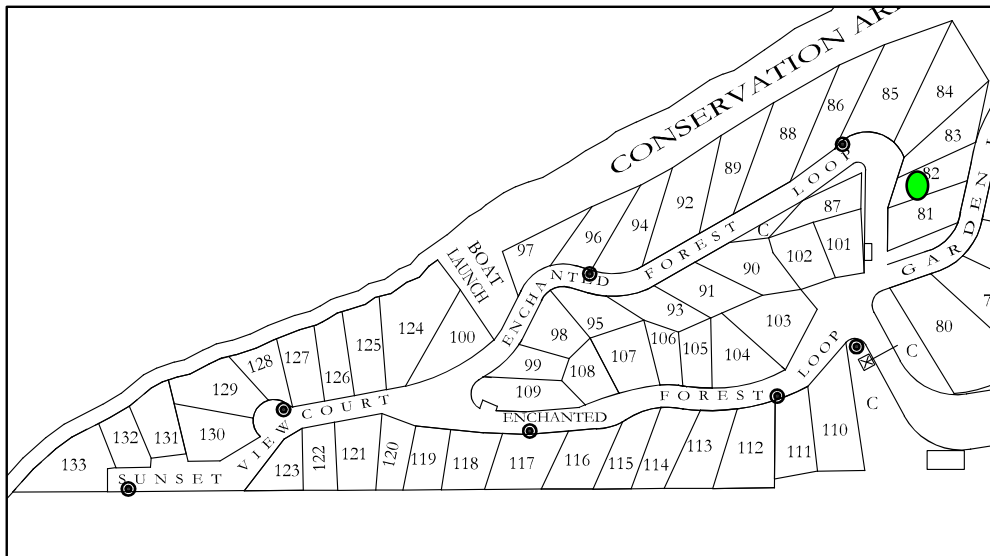
# SCHEDULE 'A'

PLAN SHOWING RV CAMPGROUND PHASE 1  
S.W. 1/4 SEC. 20, TWP. 42, RGE. 26, W. 2ND MER.  
RM of HOODOO #401, SASKATCHEWAN  
BY T.R. WEBB, S.L.S. FEBRUARY 2017  
SCALE 1:500



1. Dimensions shown are in metres and decimals thereof.
  2. Parcel C represents Conservation Area
  3. A campground administration permit is required prior to removal of live trees and shrubs.
  4. Cutting of trees and shrubbery in the Conservation Areas is not allowed
  5. Cutting trees and shrubbery in the buffer strip along the lakeshore is not allowed.  
Alteration of the Lake Bank is not allowed.
- \*NO CLEAR CUTTING IS ALLOWED\*

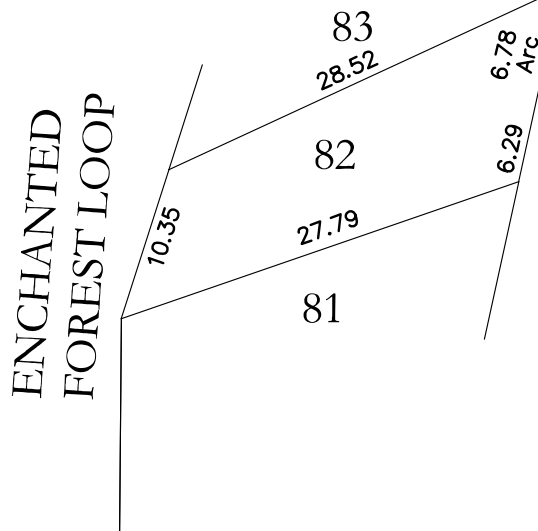
KEY PLAN



**SITE 82**

**\$49,900**

APPROXIMATE  
AREA OF LOT 82  
sq. m. = 263.63±  
sq. ft. = 2837.7±



Prepared by

Webb Surveys

© 2017

11-2219cc

BJF

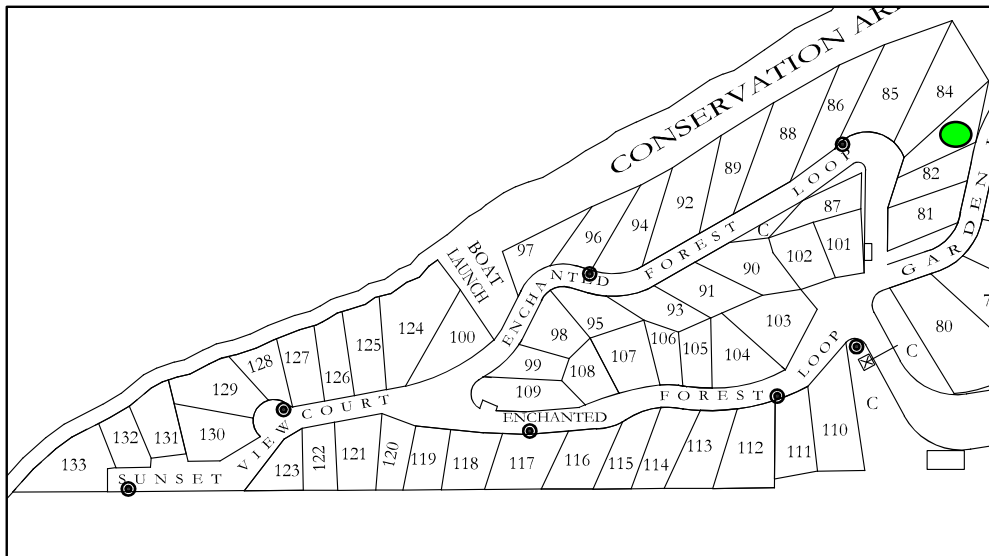
# SCHEDULE 'A'

PLAN SHOWING RV CAMPGROUND PHASE 1  
S.W. 1/4 SEC. 20, TWP. 42, RGE. 26, W. 2ND MER.  
RM of HOODOO #401, SASKATCHEWAN  
BY T.R. WEBB, S.L.S. FEBRUARY 2017  
SCALE 1:500



1. Dimensions shown are in metres and decimals thereof.
  2. Parcel C represents Conservation Area
  3. A campground administration permit is required prior to removal of live trees and shrubs.
  4. Cutting of trees and shrubbery in the Conservation Areas is not allowed
  5. Cutting trees and shrubbery in the buffer strip along the lakeshore is not allowed.  
Alteration of the Lake Bank is not allowed.
- \*NO CLEAR CUTTING IS ALLOWED\*

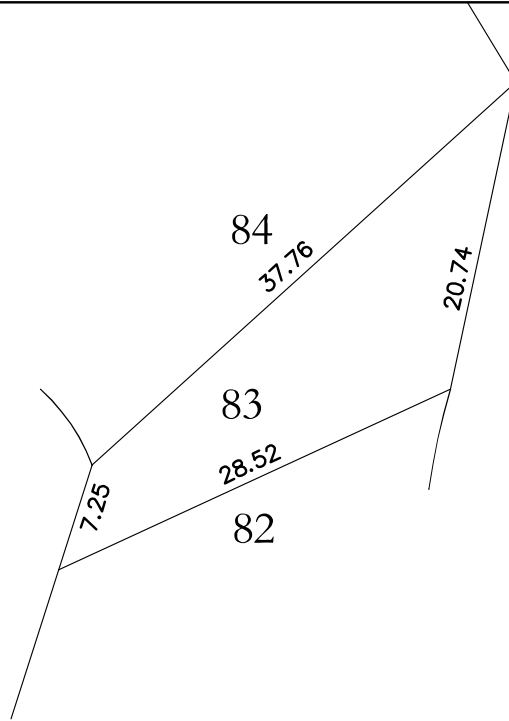
KEY PLAN



**SITE 83**  
**\$49,900**

APPROXIMATE  
AREA OF LOT 83  
sq. m. = 305.86±  
sq. ft. = 3292.3±

ENCHANTED  
FOREST LOOP



Prepared by

  
*Webb Surveys*

© 2017

11-2219cc

BJF

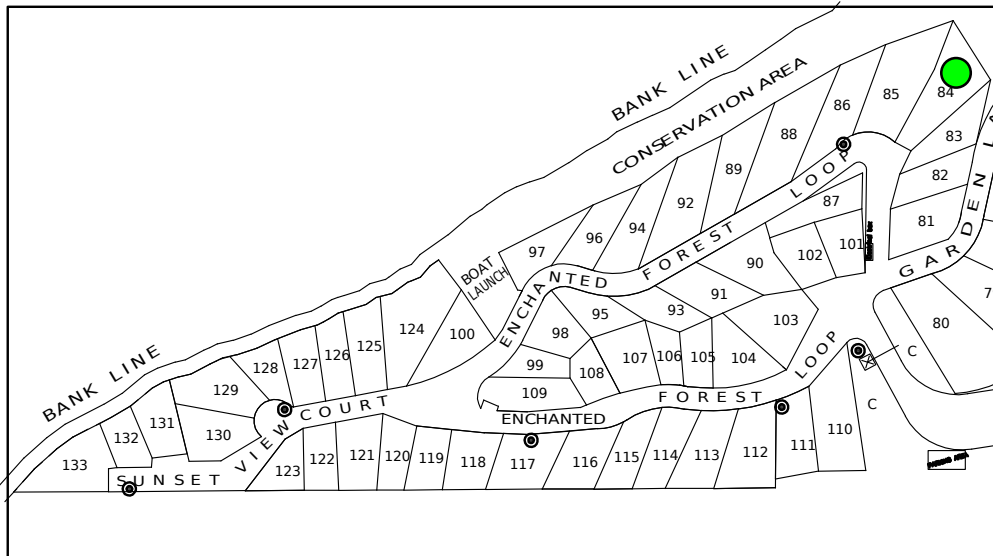
# SCHEDULE 'A'

PLAN SHOWING RV CAMPGROUND PHASE 3  
S.W. 1/4 SEC. 20, TWP. 42, RGE. 26, W. 2ND  
RM of HOODOO #401, SASKATCHEWAN  
BY T.R. WEBB, S.L.S. FEBRUARY 2017  
SCALE 1:500

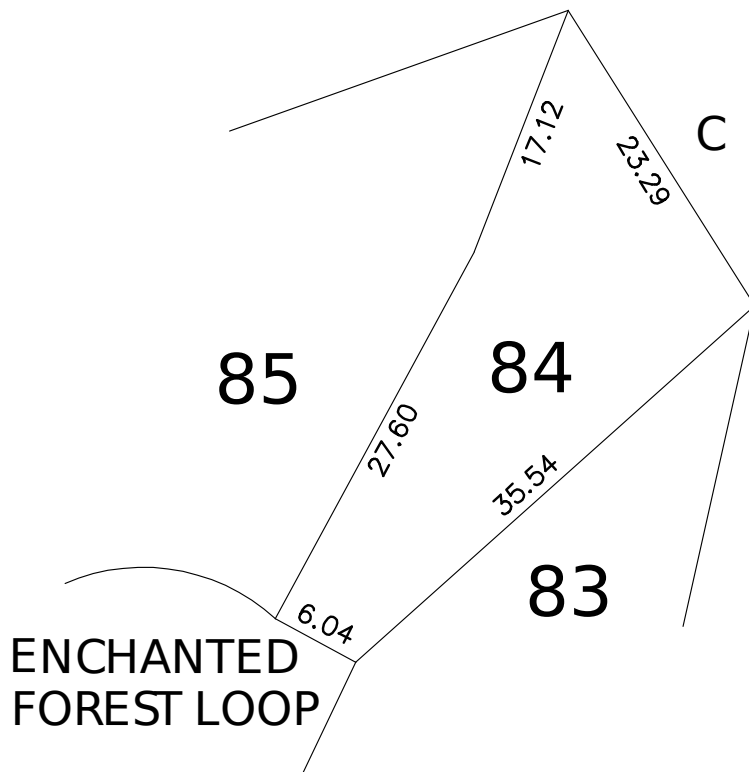
**Deep Woods**  
RV CAMPGROUND  
WAKAW, SK  
**PHASE THREE**

1. Dimensions shown are in metres and decimals thereof.
  2. Parcel C represents Conservation Area
  3. A campground administration permit is required prior to removal of live trees and shrubs.
  4. Cutting of trees and shrubbery in the Conservation Areas is not allowed
  5. Cutting trees and shrubbery in the buffer strip along the lakeshore is not allowed.  
Alteration of the Lake Bank is not allowed.
- \*NO CLEAR CUTTING IS ALLOWED\*

## KEY PLAN



**SITE 84**  
**\$64,900**



APPROXIMATE  
AREA OF LOT 84  
sq. m. = 507.90±  
sq. ft. = 5466.9±

Prepared by  
  
**Webb Surveys**  
© 2019  
11-2219cc BJJ

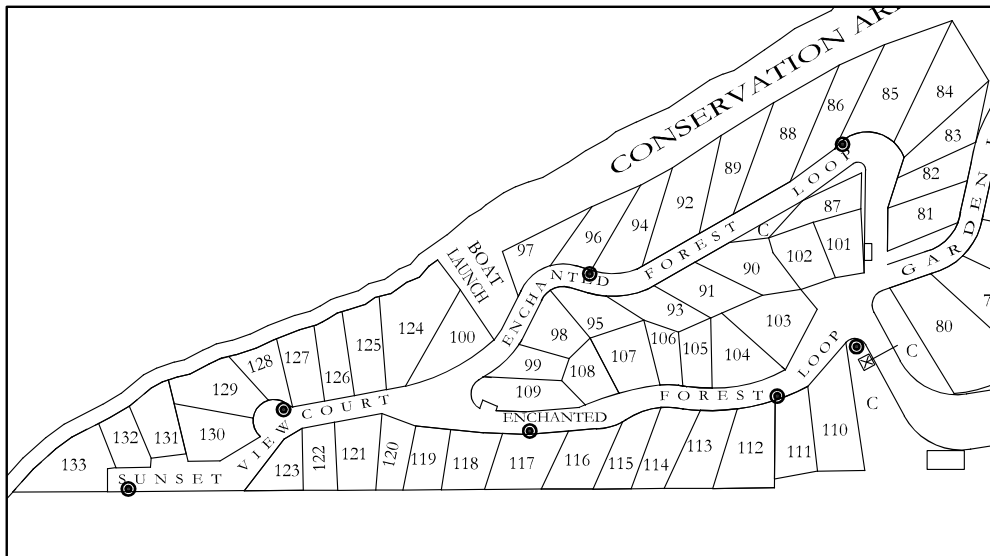
# SCHEDULE 'A'

PLAN SHOWING RV CAMPGROUND PHASE 1  
S.W. 1/4 SEC. 20, TWP. 42, RGE. 26, W. 2ND MER.  
RM of HOODOO #401, SASKATCHEWAN  
BY T.R. WEBB, S.L.S. FEBRUARY 2017  
SCALE 1:500

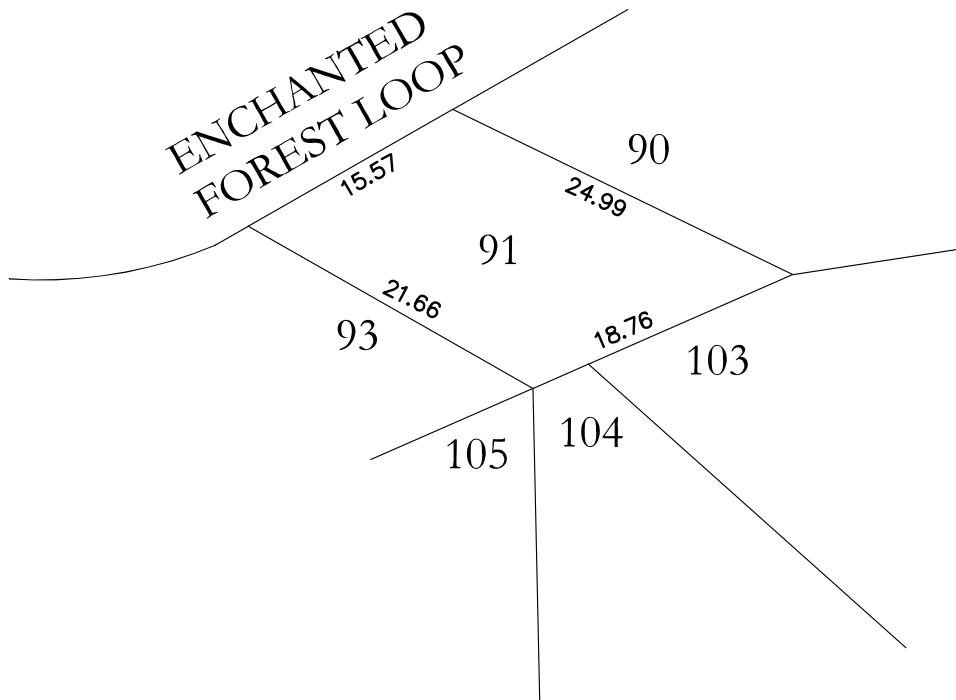


1. Dimensions shown are in metres and decimals thereof.
  2. Parcel C represents Conservation Area
  3. A campground administration permit is required prior to removal of live trees and shrubs.
  4. Cutting of trees and shrubbery in the Conservation Areas is not allowed
  5. Cutting trees and shrubbery in the buffer strip along the lakeshore is not allowed. Alteration of the Lake Bank is not allowed.
- \*NO CLEAR CUTTING IS ALLOWED\*

KEY PLAN



Site 91  
\$54,900



APPROXIMATE  
AREA OF LOT 91  
sq. m. = 323.45±  
sq. ft. = 3481.6±

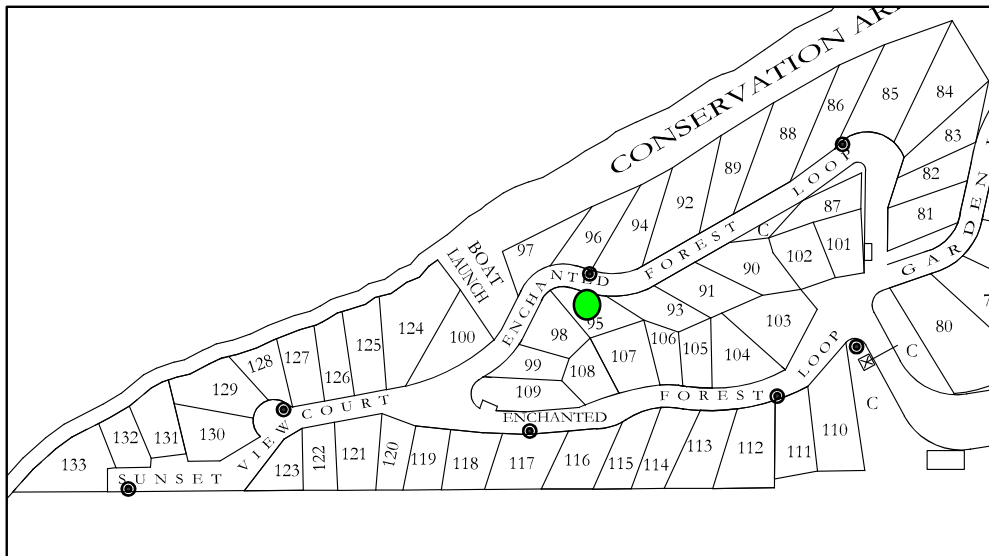
# SCHEDULE 'A'

PLAN SHOWING RV CAMPGROUND PHASE 1  
S.W. 1/4 SEC. 20, TWP. 42, RGE. 26, W. 2ND MER.  
RM of HOODOO #401, SASKATCHEWAN  
BY T.R. WEBB, S.L.S. FEBRUARY 2017  
SCALE 1:500



1. Dimensions shown are in metres and decimals thereof.
  2. Parcel C represents Conservation Area
  3. A campground administration permit is required prior to removal of live trees and shrubs.
  4. Cutting of trees and shrubbery in the Conservation Areas is not allowed
  5. Cutting trees and shrubbery in the buffer strip along the lakeshore is not allowed. Alteration of the Lake Bank is not allowed.
- \*NO CLEAR CUTTING IS ALLOWED\*

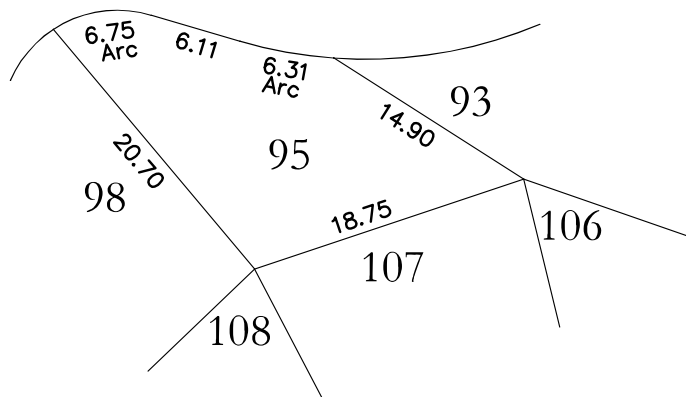
KEY PLAN



**SITE 95**  
**\$49,900**

## ENCHANTED FOREST LOOP

APPROXIMATE  
AREA OF LOT 95  
sq. m. = 258.11±  
sq. ft. = 2778.2±



Prepared by

*Webb Surveys*

© 2017

11-2219cc

BJF

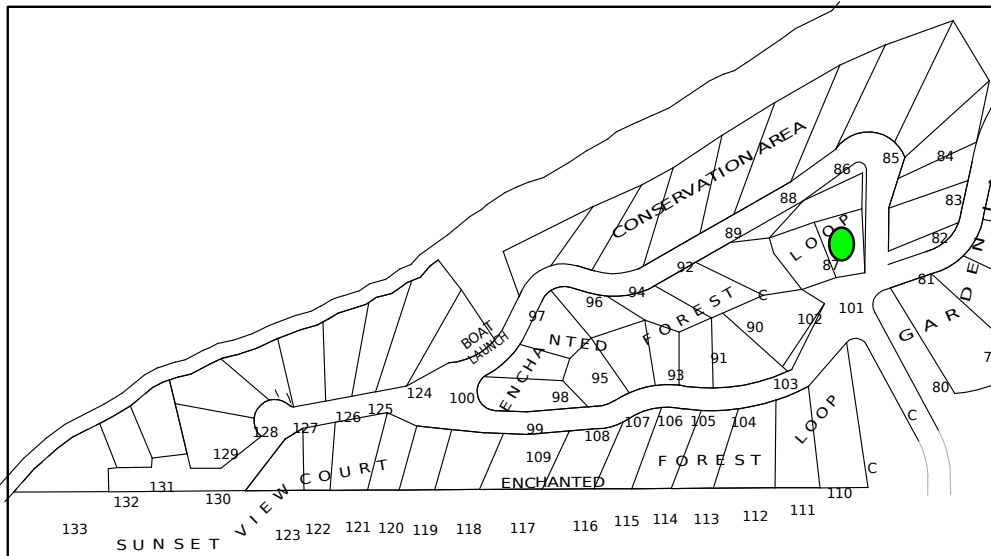
# SCHEDULE 'A'

PLAN SHOWING RV CAMPGROUND PHASE 1  
S.W. 1/4 SEC. 20, TWP. 42, RGE. 26, W. 2ND MER.  
RM of HOODOO #401, SASKATCHEWAN  
BY T.R. WEBB, S.L.S. JANUARY 2016  
SCALE 1:500



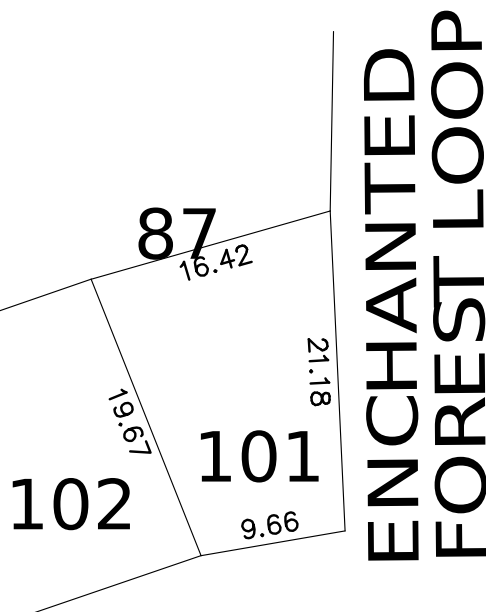
1. Dimensions shown are in metres and decimals thereof.
  2. Parcel C represents Conservation Area
  3. A campground administration permit is required prior to removal of live trees and shrubs.
  4. Cutting of trees and shrubbery in the Conservation Areas is not allowed
  5. Cutting trees and shrubbery in the buffer strip along the lakeshore is not allowed. Alteration of the Lake Bank is not allowed.
- \*NO CLEAR CUTTING IS ALLOWED\*

## KEY PLAN



SITE 101  
\$44,900

APPROXIMATE  
AREA OF LOT 101  
sq. m. = 262.24±  
sq. ft. = 2822.8±



ENCHANTED  
FOREST LOOP



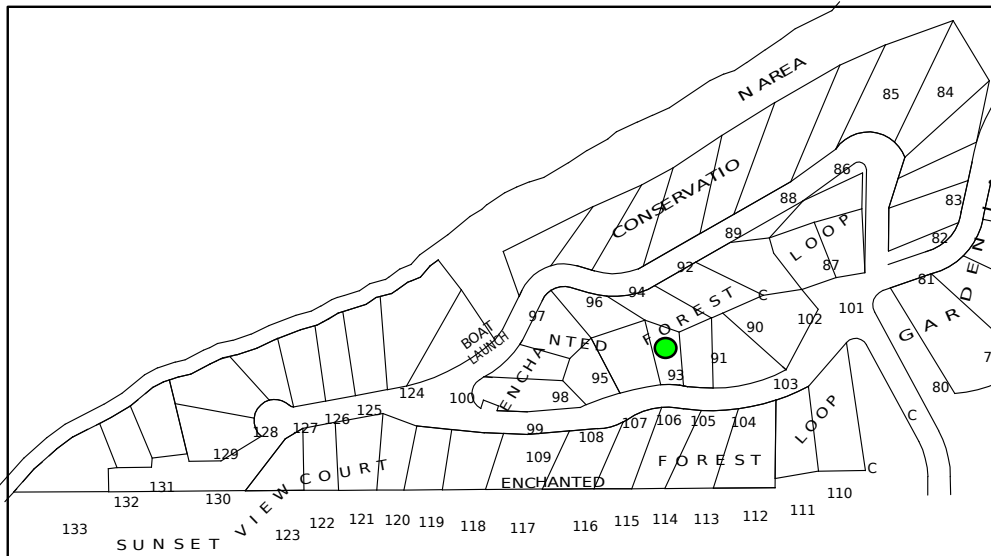
# SCHEDULE 'A'

PLAN SHOWING RV CAMPGROUND PHASE 1  
S.W. 1/4 SEC. 20, TWP. 42, RGE. 26, W. 2ND MER.  
RM of HOODOO #401, SASKATCHEWAN  
BY T.R. WEBB, S.L.S. MAY 2016  
SCALE 1:500

**Deep Woods**  
RV CAMPGROUND  
WAKAW, SK  
**PHASE THREE**

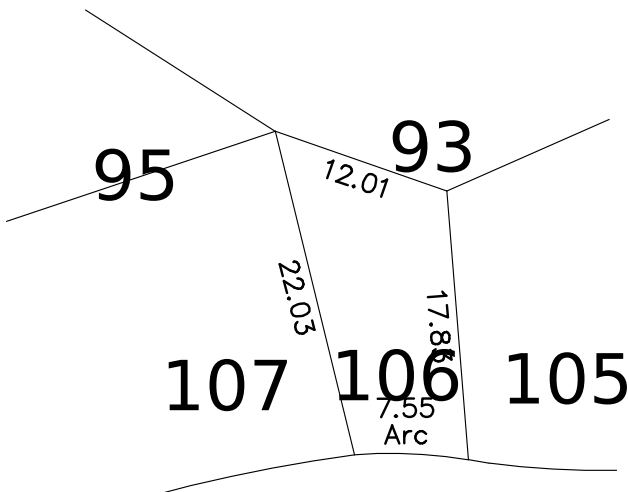
1. Dimensions shown are in metres and decimals thereof.
  2. Parcel C represents Conservation Area
  3. A campground administration permit is required prior to removal of live trees and shrubs.
  4. Cutting of trees and shrubbery in the Conservation Areas is not allowed
  5. Cutting trees and shrubbery in the buffer strip along the lakeshore is not allowed.  
Alteration of the Lake Bank is not allowed.
- \*NO CLEAR CUTTING IS ALLOWED\*

## KEY PLAN



**SITE 106**  
**\$34,900**

APPROXIMATE  
AREA OF LOT 106  
sq. m. = 176.72±  
sq. ft. = 1902.2±



**ENCHANTED  
FOREST LOOP**

Prepared by  
  
**Webb Surveys**  
© 2016  
11-2219cc BJJ

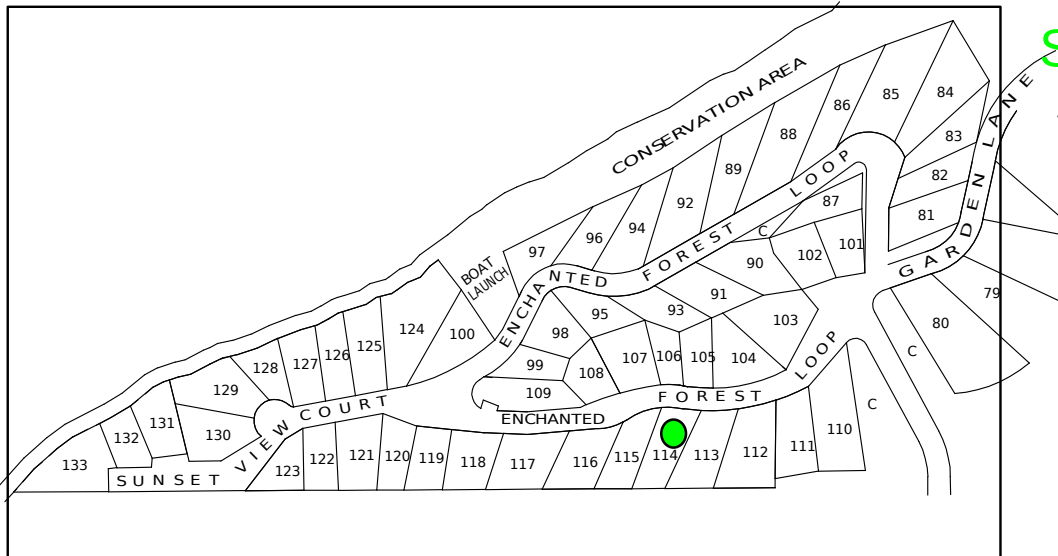
# SCHEDULE 'A'

PLAN SHOWING RV CAMPGROUND PHASE 1  
S.W. 1/4 SEC. 20, TWP. 42, RGE. 26, W. 2ND MER.  
RM of HOODOO #401, SASKATCHEWAN  
BY T.R. WEBB, S.L.S. MAY 2016  
SCALE 1:500



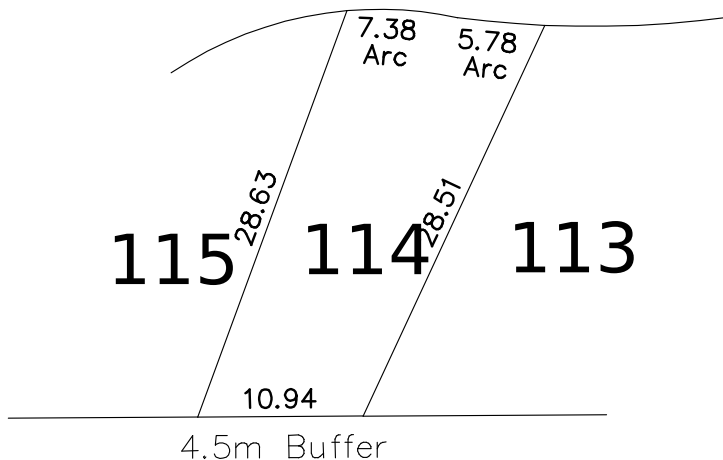
1. Dimensions shown are in metres and decimals thereof.
  2. Parcel C represents Conservation Area
  3. A campground administration permit is required prior to removal of live trees and shrubs.
  4. Cutting of trees and shrubbery in the Conservation Areas is not allowed
  5. Cutting trees and shrubbery in the buffer strip along the lakeshore is not allowed.  
Alteration of the Lake Bank is not allowed.
- \*NO CLEAR CUTTING IS ALLOWED\*

## KEY PLAN



**SITE 114**  
**\$44,900**

## ENCHANTED FOREST LOOP



APPROXIMATE  
AREA OF LOT 114  
sq. m. = 323.22±  
sq. ft. = 3479.1±

Prepared by

Webb Surveys

© 2016

11-2219cc

BJF